



CAAC Design and Construction Update

4-21-2022



2022 Projects

New Buildings & Additions

Marshdale ES - Replacement HCM – GC GH Phipps

Construction



Marshdale ES - Replacement HCM - GC GH Phipps

Construction



D'Evelyn – 8 CR Addition HCM – GC Himmelman

Construction



Evergreen MS Efficiency & Future Ready Construction

AMD – Haselden



Evergreen HS Efficiency Future Ready DLR – CMGC JHL

Construction



Powderhorn ES - Addition Hollis & Miller – Himmelman

Construction



Prospect Valley ES - Replacement MOA – GH Phipps

Construction



Jeffco Open - Addition HCM - Bassett

Construction



Ralston Valley HS - Addition EUA - Himmelman

Construction



Standley Lake HS - Addition Cannon – FCI Constructors

Construction



JeffcoNET Henkels & McCoy - Design Build

Construction



Project Information

Project Start – April 29, 2020

Total Miles of conduit to be bored – 119

Miles installed – 71 (60%) (Red)

Fiber placed at 99 schools (MDF to Street)
Complete remainder end of April

12 crews working primarily on the North Ring

2022

37 - Efficiency Future
Ready
&
DW projects

DW – Roofing
Pennington ES
Roof Tech – Grabau

Construction



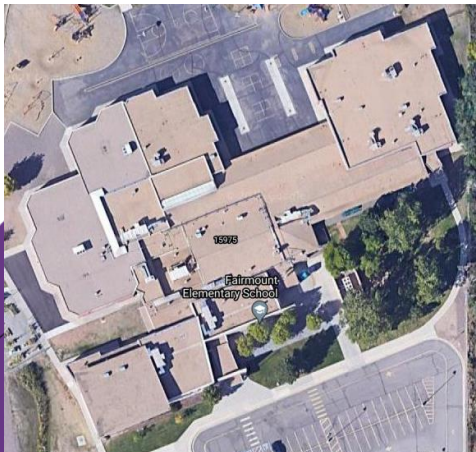
DW – Roofing -
Campbell ES (Grabau), Fairmount ES (FR) ,
S Lakewood ES (DC), Summit Ridge MS (UM), &
Pennington ES (Grabau)
SR+DK



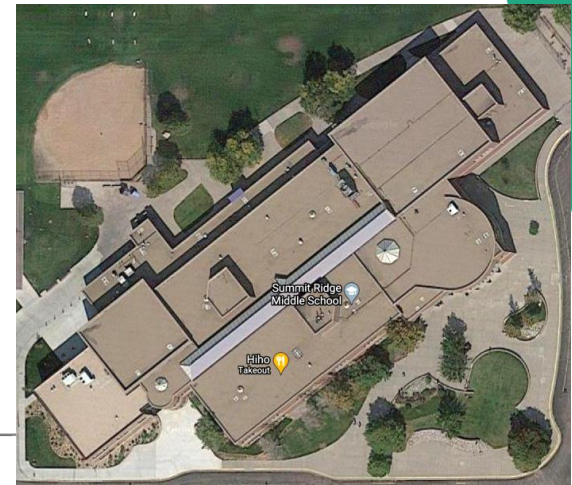
S Lakewood



Campbell



Fairmount

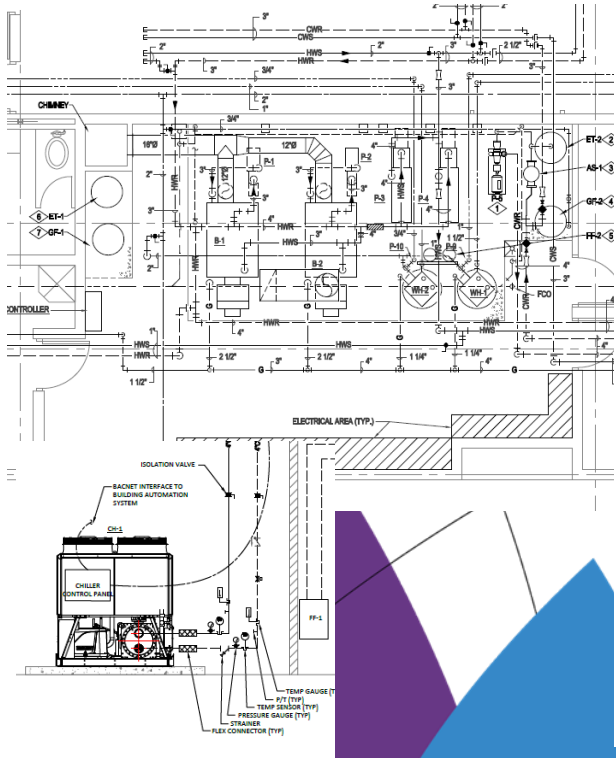


Summit Ridge

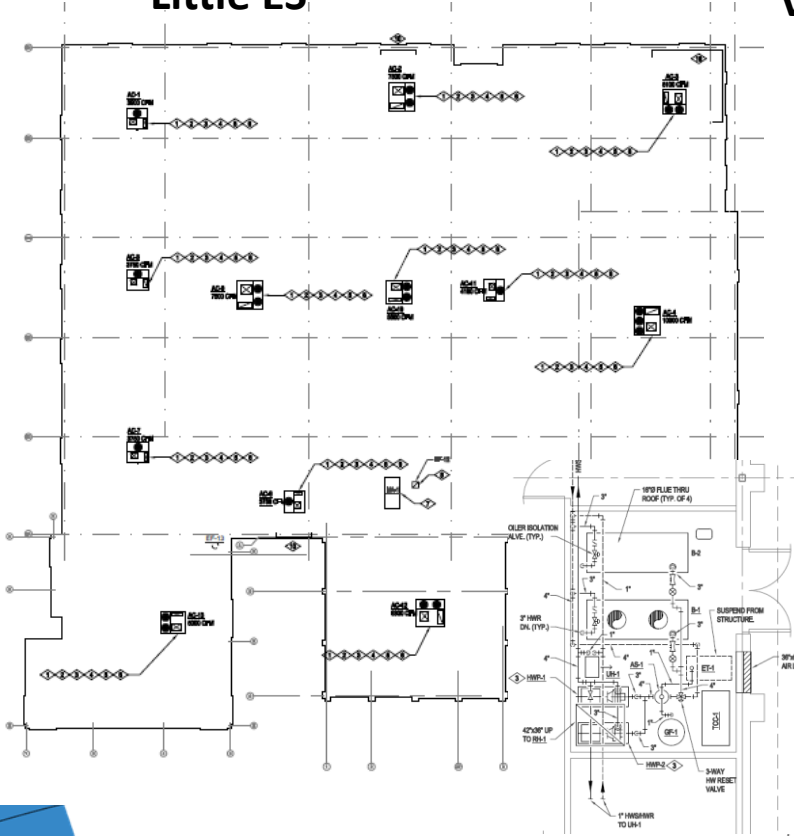
DW Mechanical 2022 Campbell ES, Little ES & Van Arsdale ES

Columbine Engineering – US Engineering

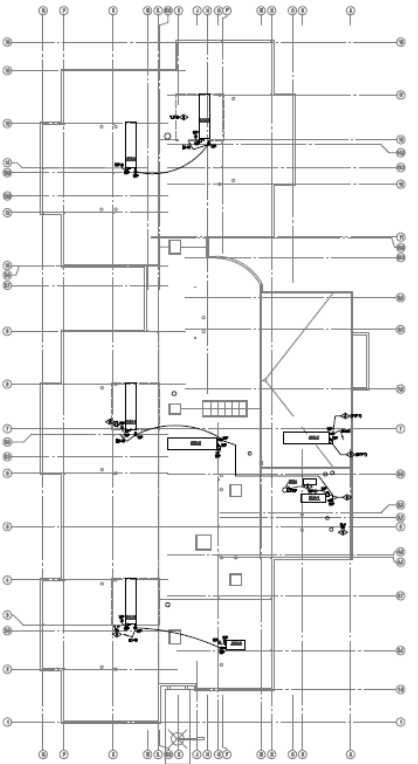
Campbell ES



Little ES



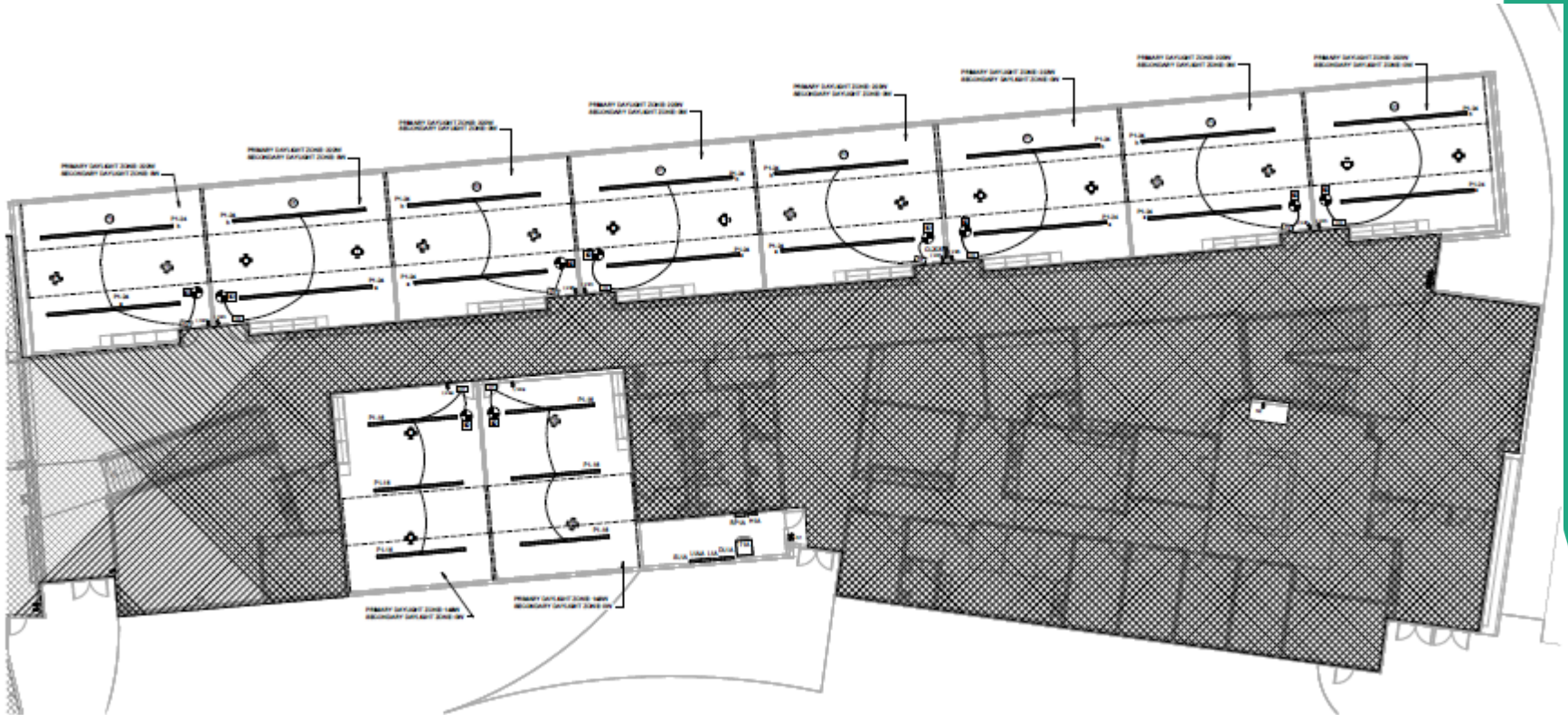
Van Arsdale ES



Efficiency Future Ready Golden HS

Construction

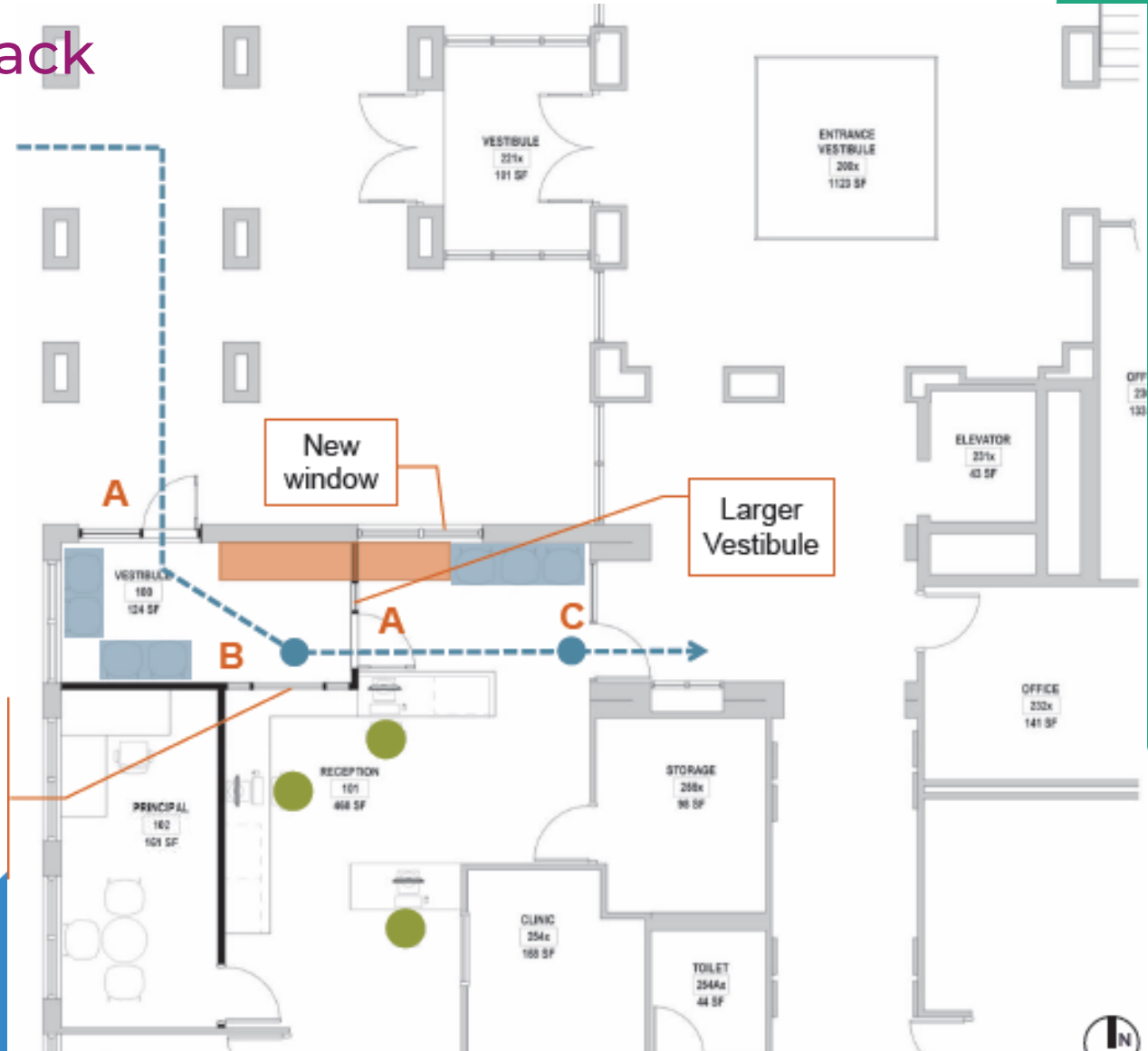
H&M – Singletrack



Efficiency Future Ready Mitchell ES

Construction

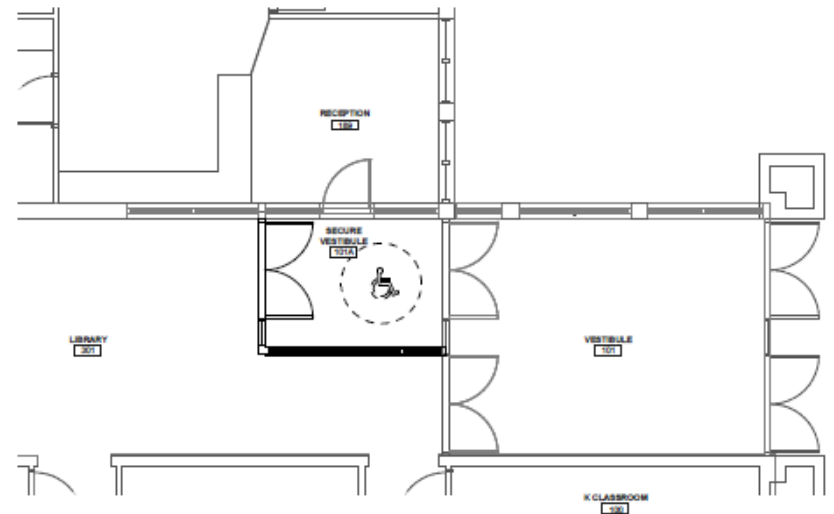
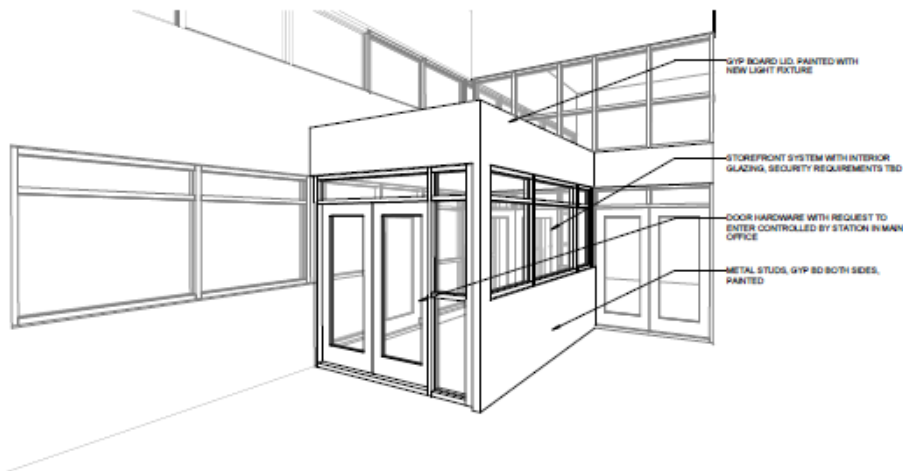
H&M – Singletrack



Efficiency Future Ready Elk Creek ES

Construction

BVH – SCS



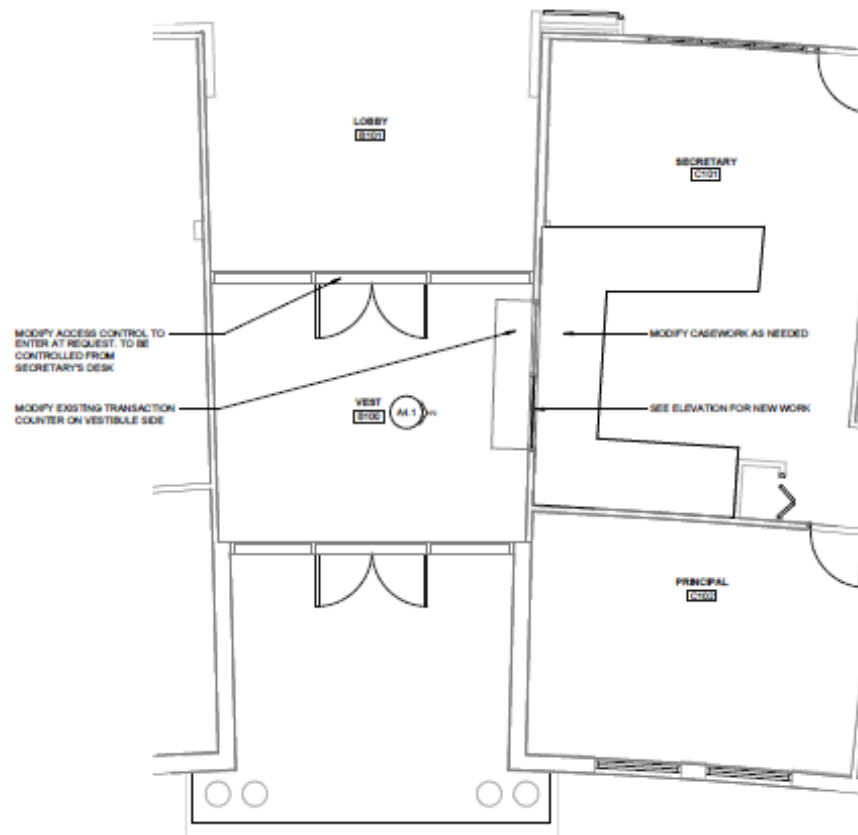
3 VESTIBULE PERSPECTIVE - FOR REFERENCE ONLY

1 ENLARGED VESTIBULE PLAN
1/4" = 1'-0"

Efficiency Future Ready West Jefferson ES

Construction

BVH – Bryan

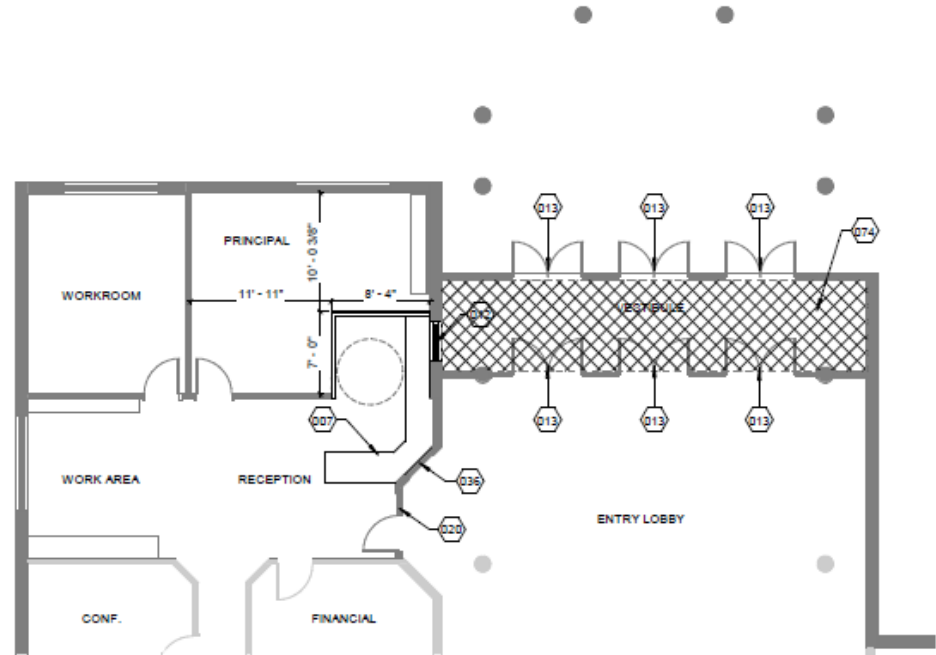



1 ENLARGED VESTIBULE PLAN
1/4" = 1'-0"

Efficiency Future Ready Emory ES

Construction

Treanor HL- Crossland



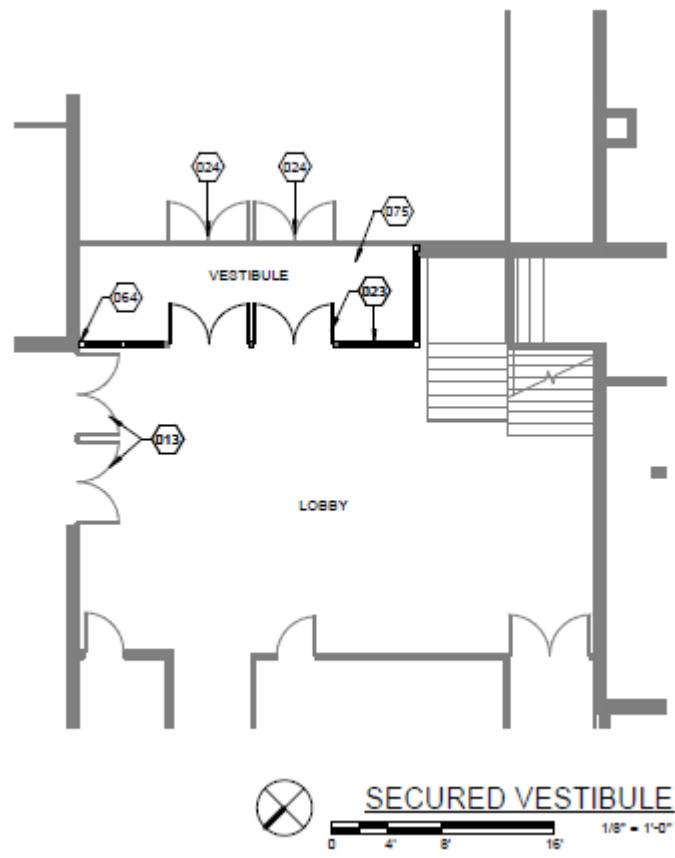
 SECURED VESTIBULE
0 4 8 16 1/8" = 1'-0"

1

Efficiency Future Ready Red Rocks ES

Construction

Treanor HL- Crossland

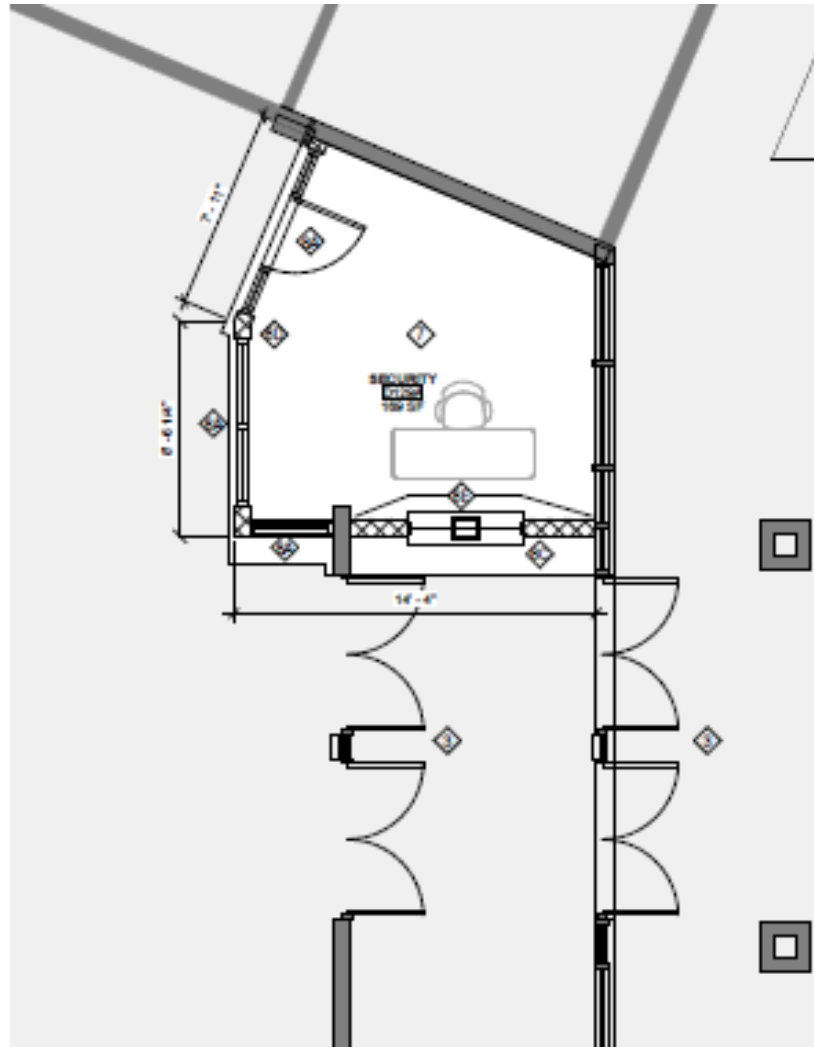


2

Efficiency Future Ready Lakewood HS

Construction

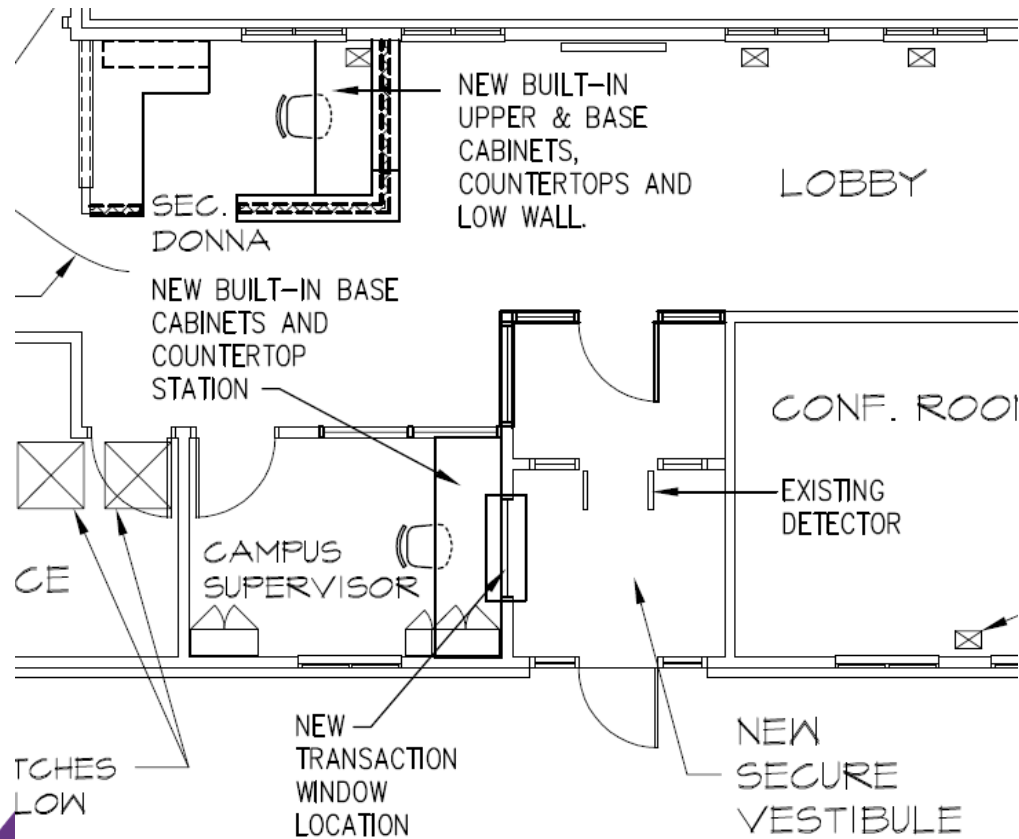
HCM – AD Miller



Efficiency Future Ready Longview HS

Construction

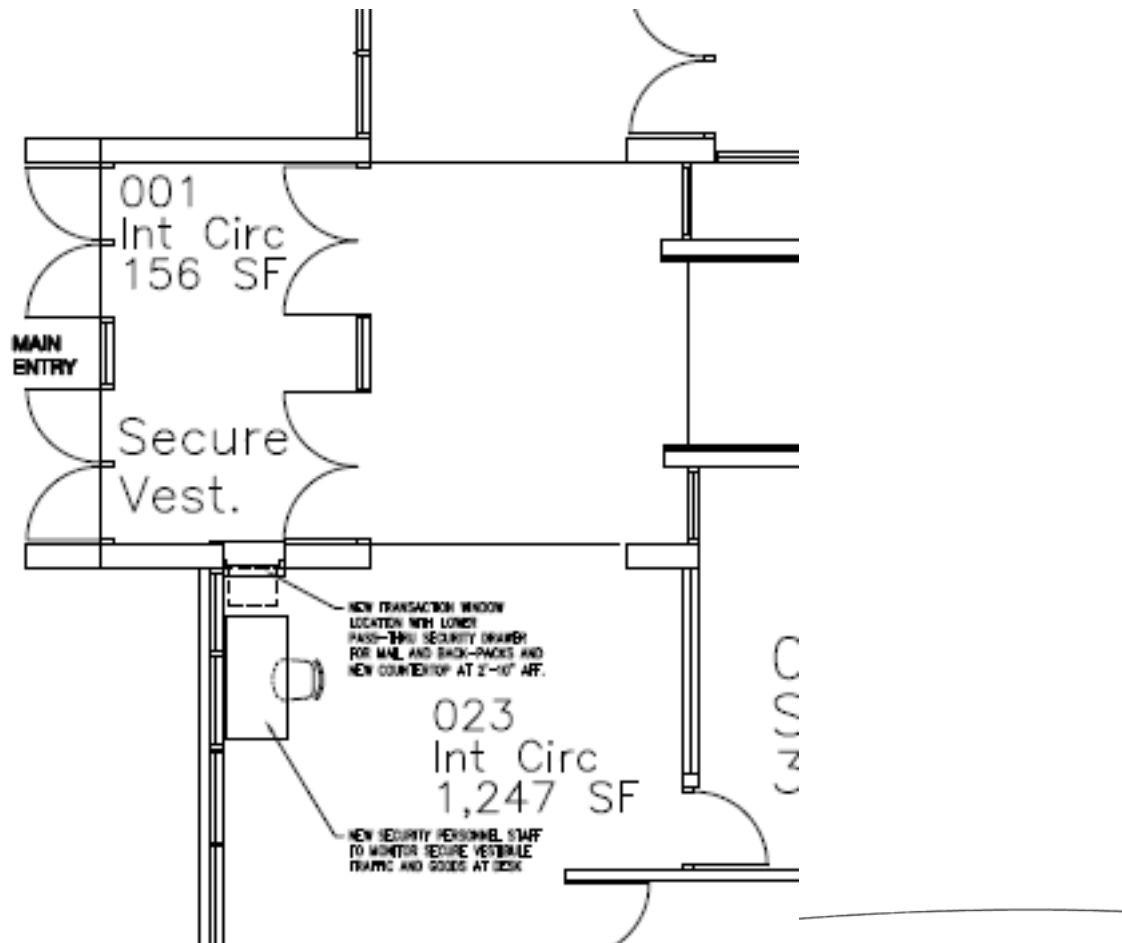
Mellin & Associates – Singletrack



Efficiency Future Ready Shelton ES

Construction

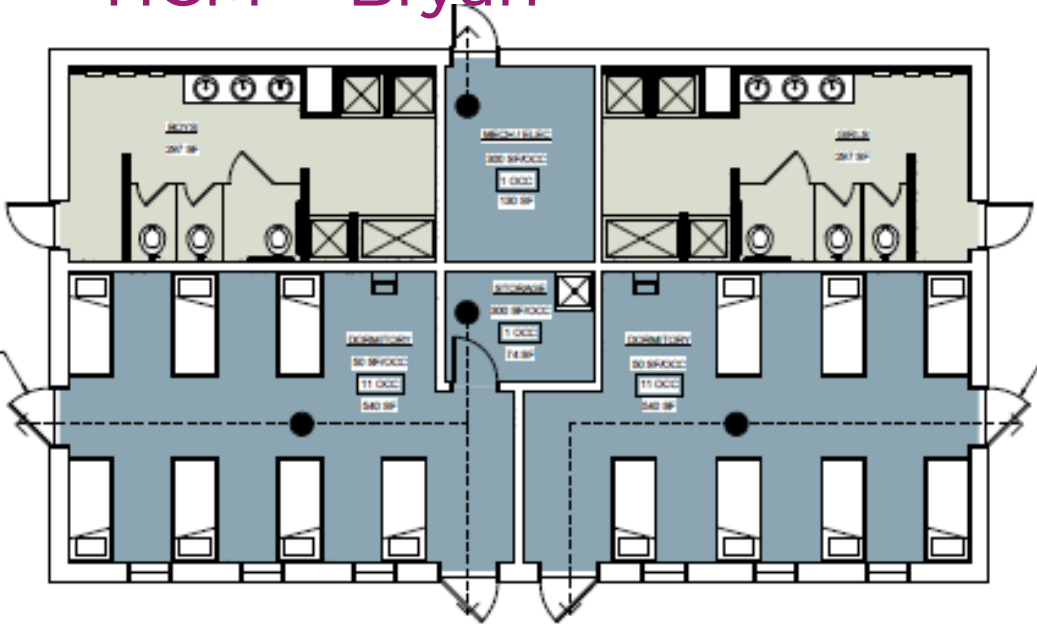
Mellin & Associates – Himmelman



Efficiency Future Ready Windy Peak OEL

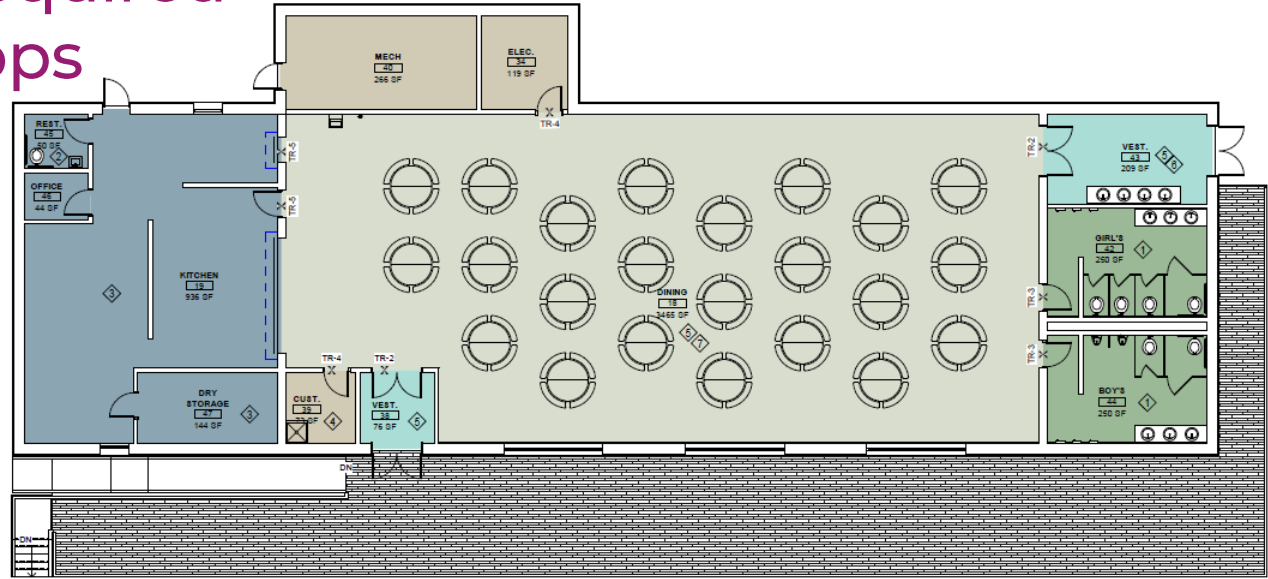
Construction

HCM – Bryan



Efficiency Future Ready
Mount Evans OEL
CAAC - Vote Required
HCM – GH Phipps

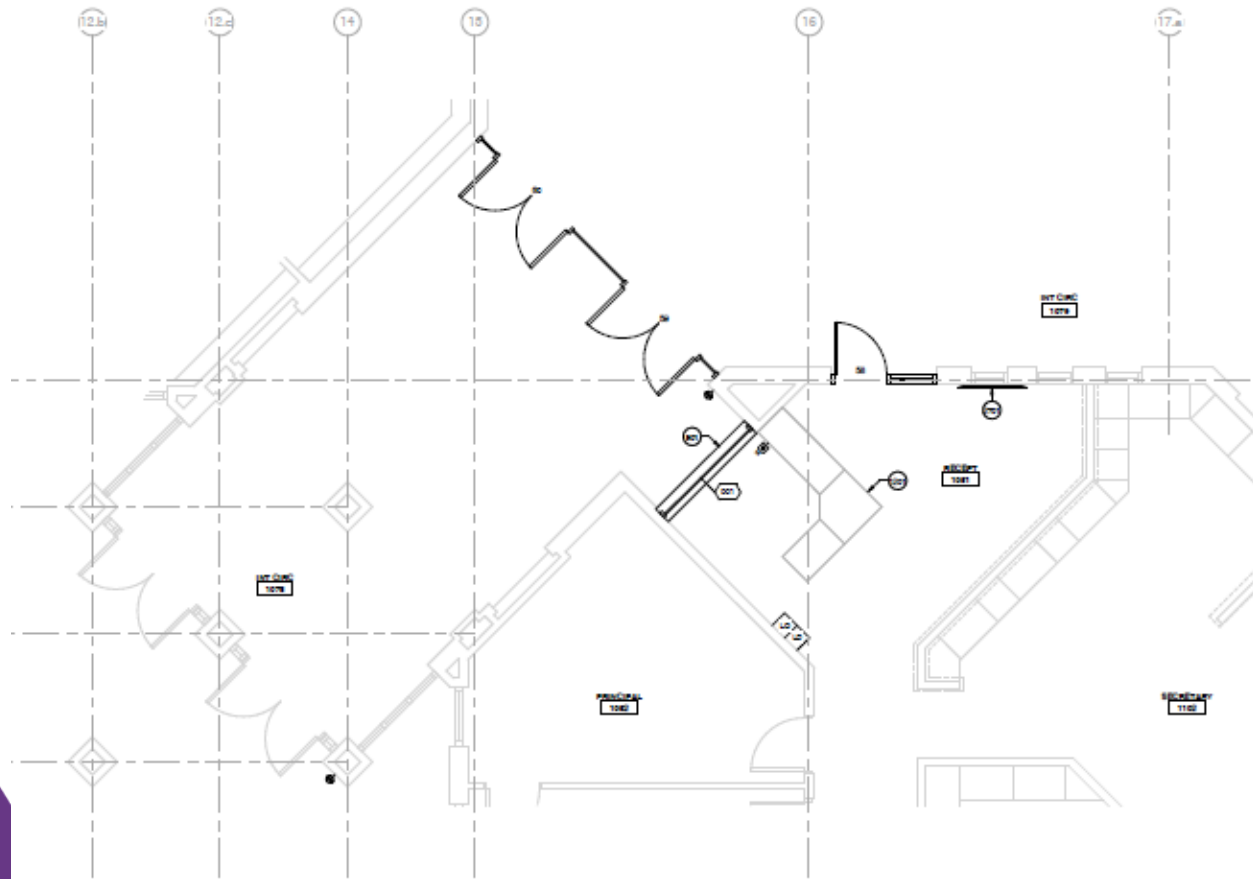
Construction



Efficiency Future Ready Stevens ES

Construction

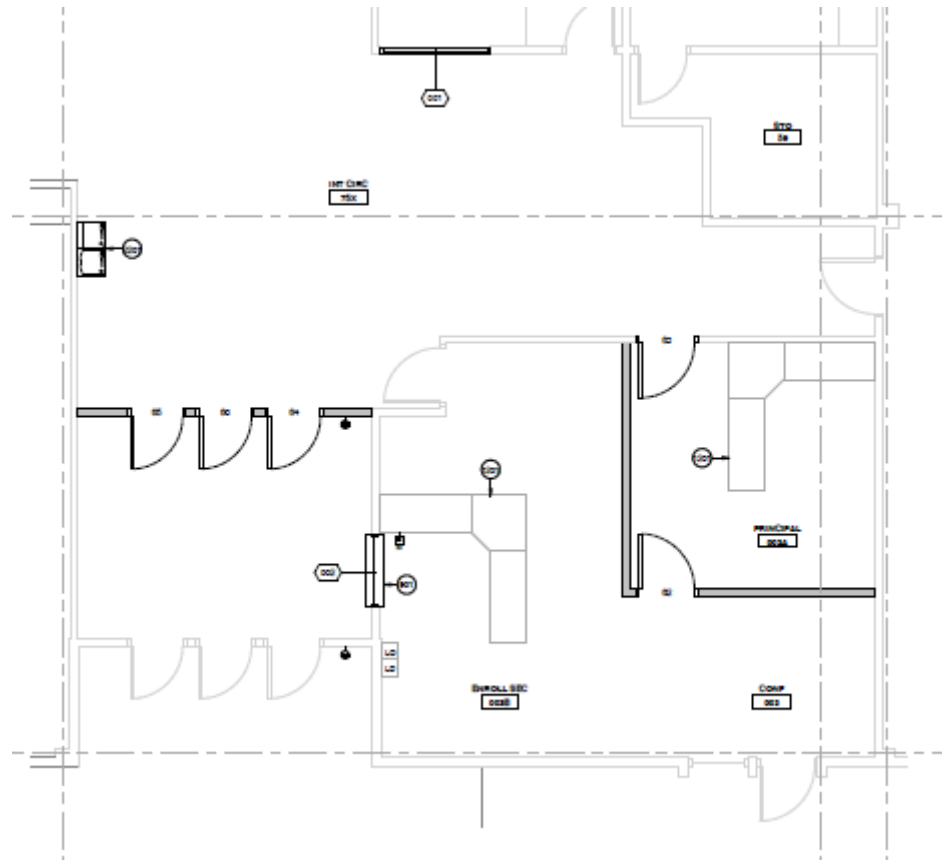
AMD – PG Arnold



Efficiency Future Ready Thomson ES

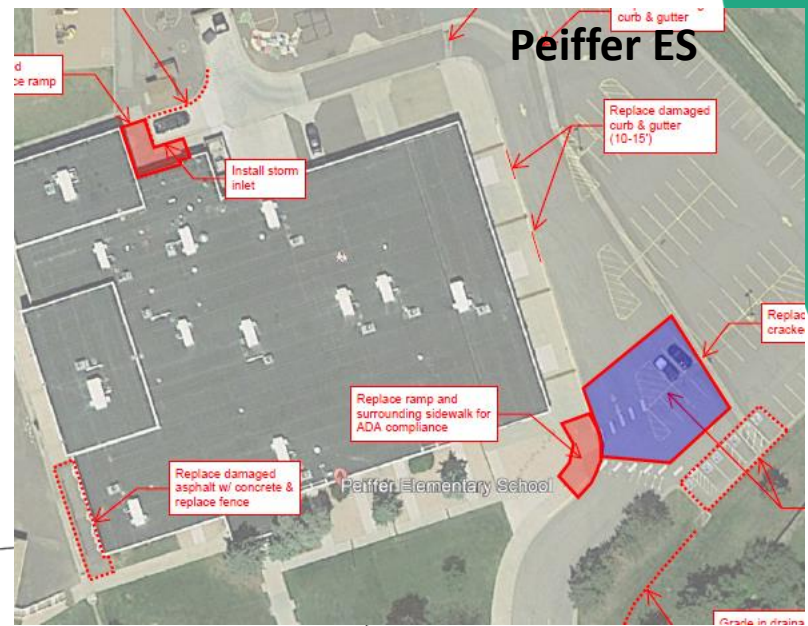
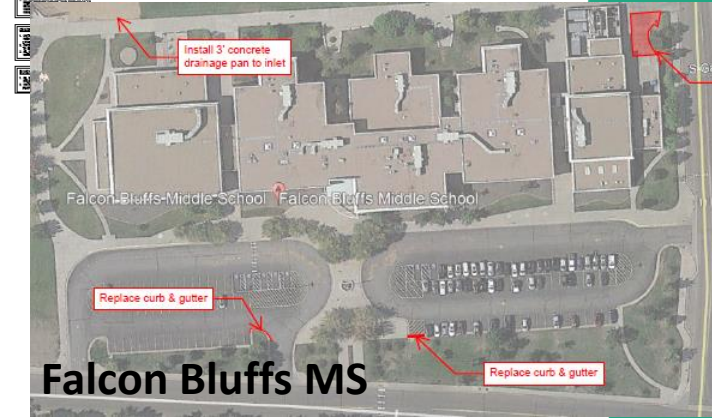
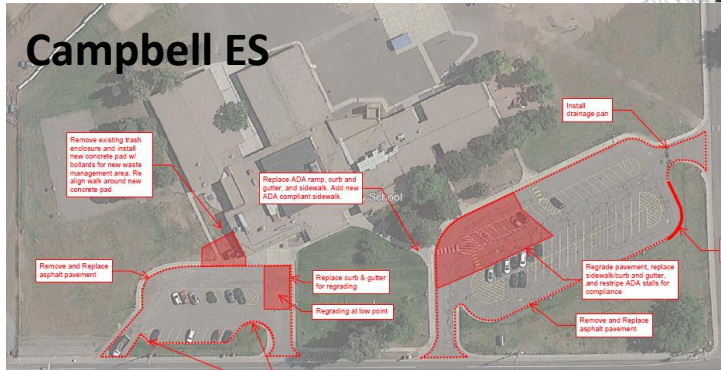
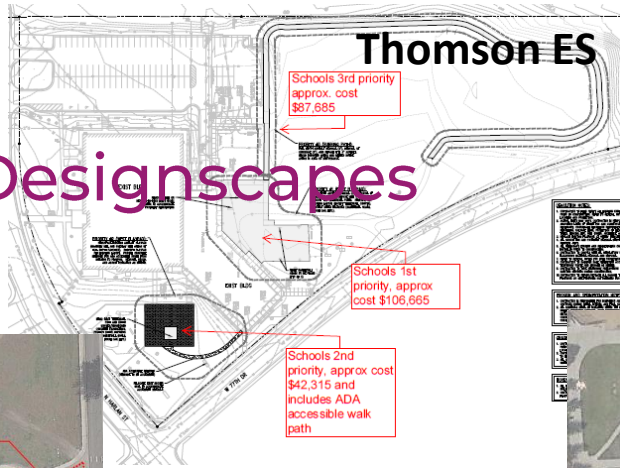
Construction

AMD – Bryan



DW Paving 2022 JVA – Colorado Designscapes

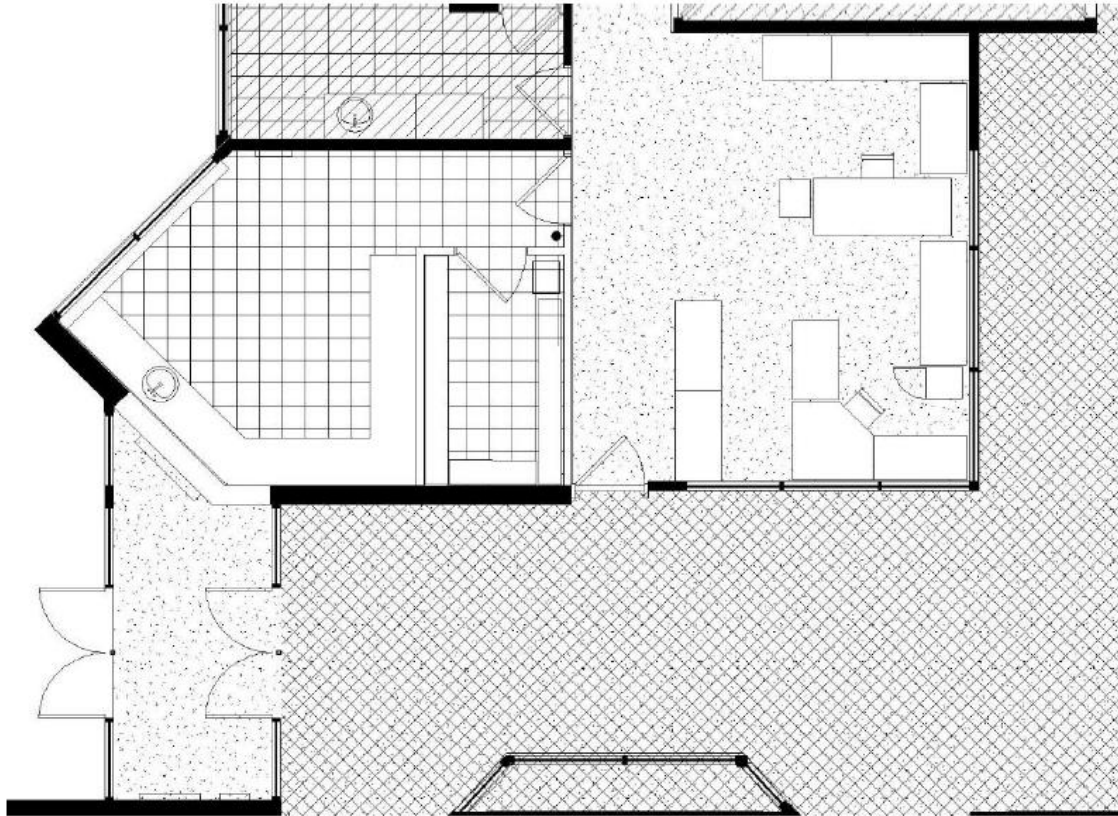
Construction



Efficiency Future Ready Stony Creek ES

Construction

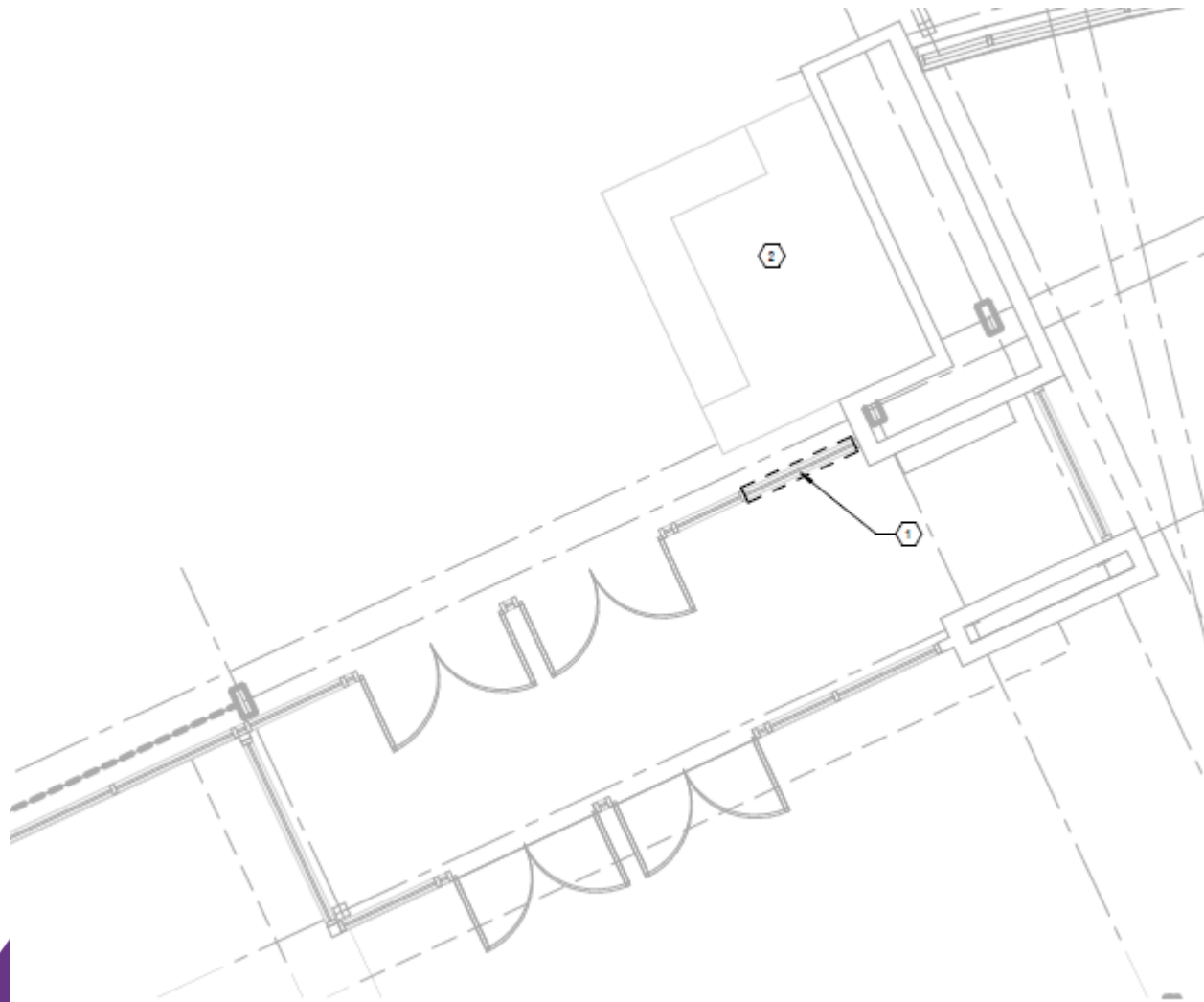
Jordin – Calahan



Efficiency Future Ready Bear Creek HS

Construction

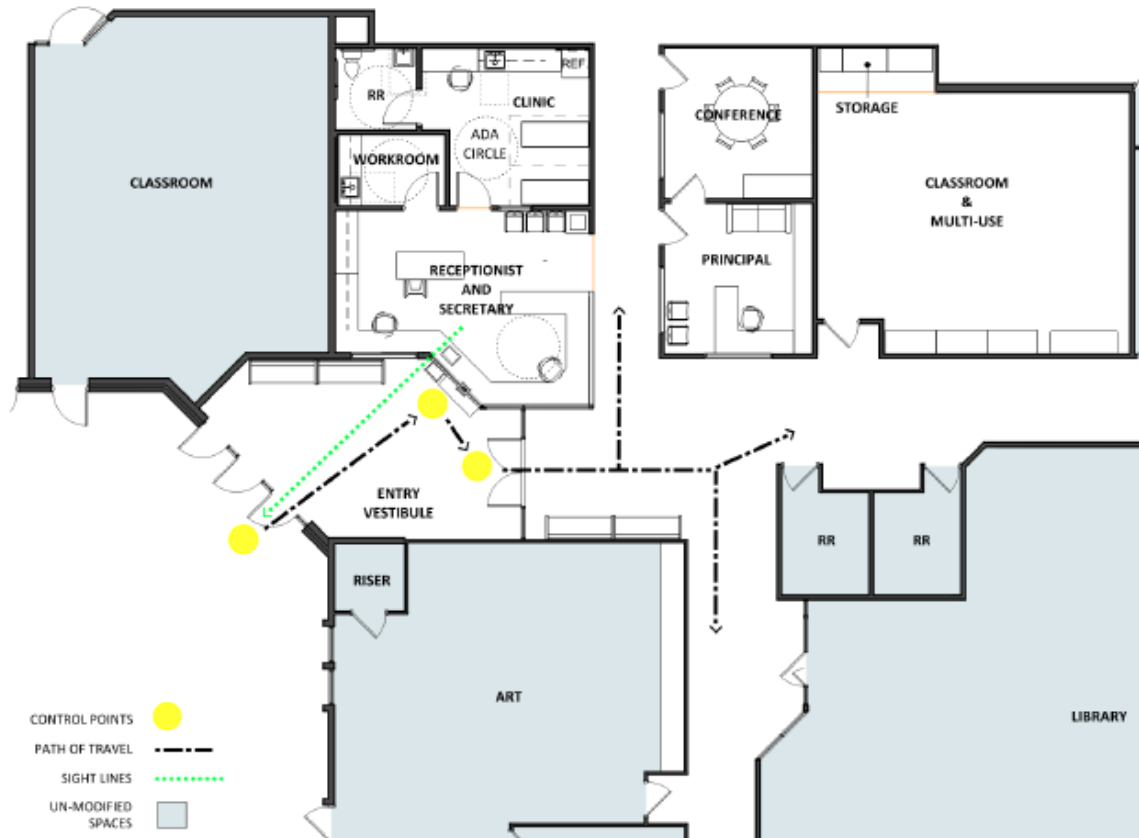
MOA – Crossland



Efficiency Future Ready Warder ES

Construction

RB+B – Golden Triangle



Efficiency Future Ready Warren Tech North

Construction

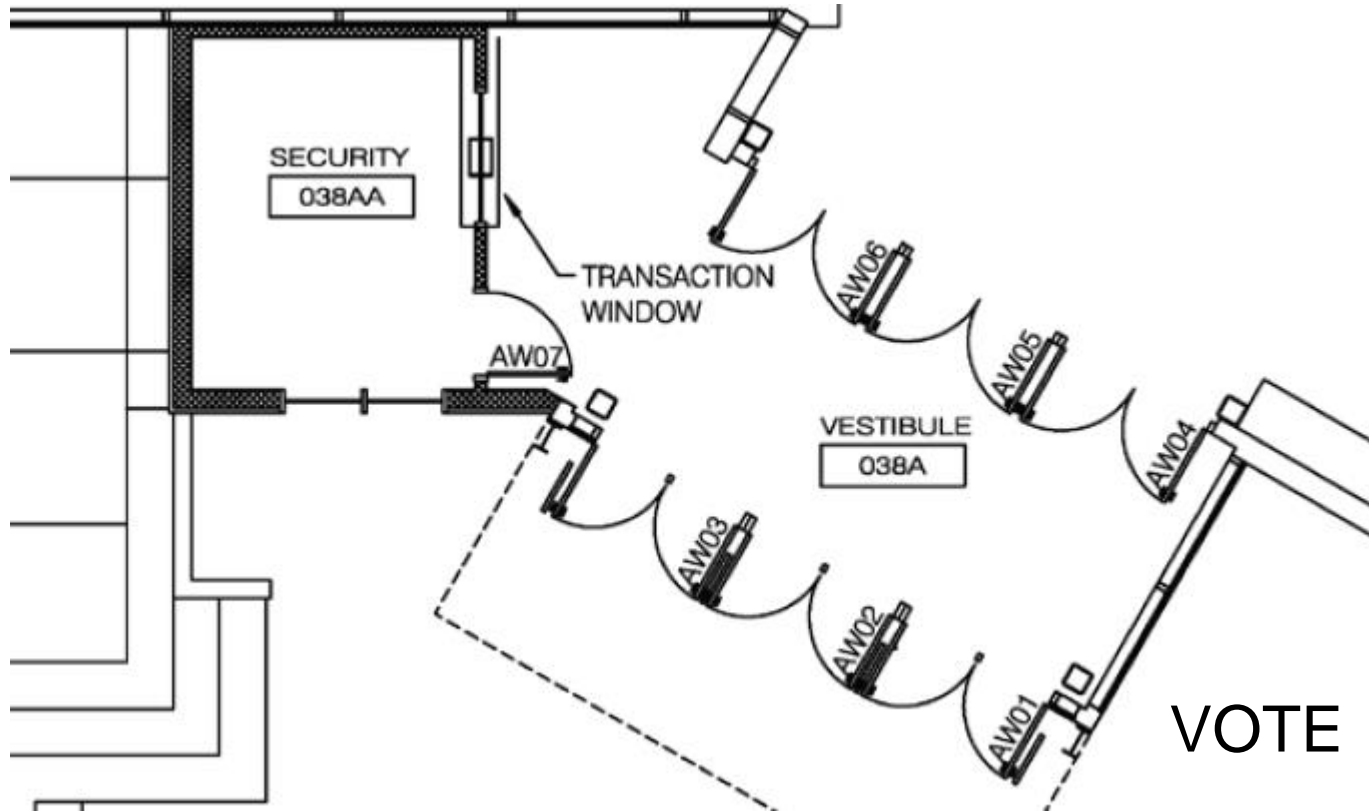
LOA – Golden Triangle



Efficiency Future Ready Arvada West HS

Construction

LOA – Golden Triangle



DW – Flooring I

Dear Creek MS, Falcon Bluffs MS,

Summit Ridge MS, Peiffer ES,

Governor's Ranch ES, Mt Carbon ES,

Rooney Ranch ES

AMD – PG Arnold - SCS (3 Gym Floors)



Mt Carbon ES



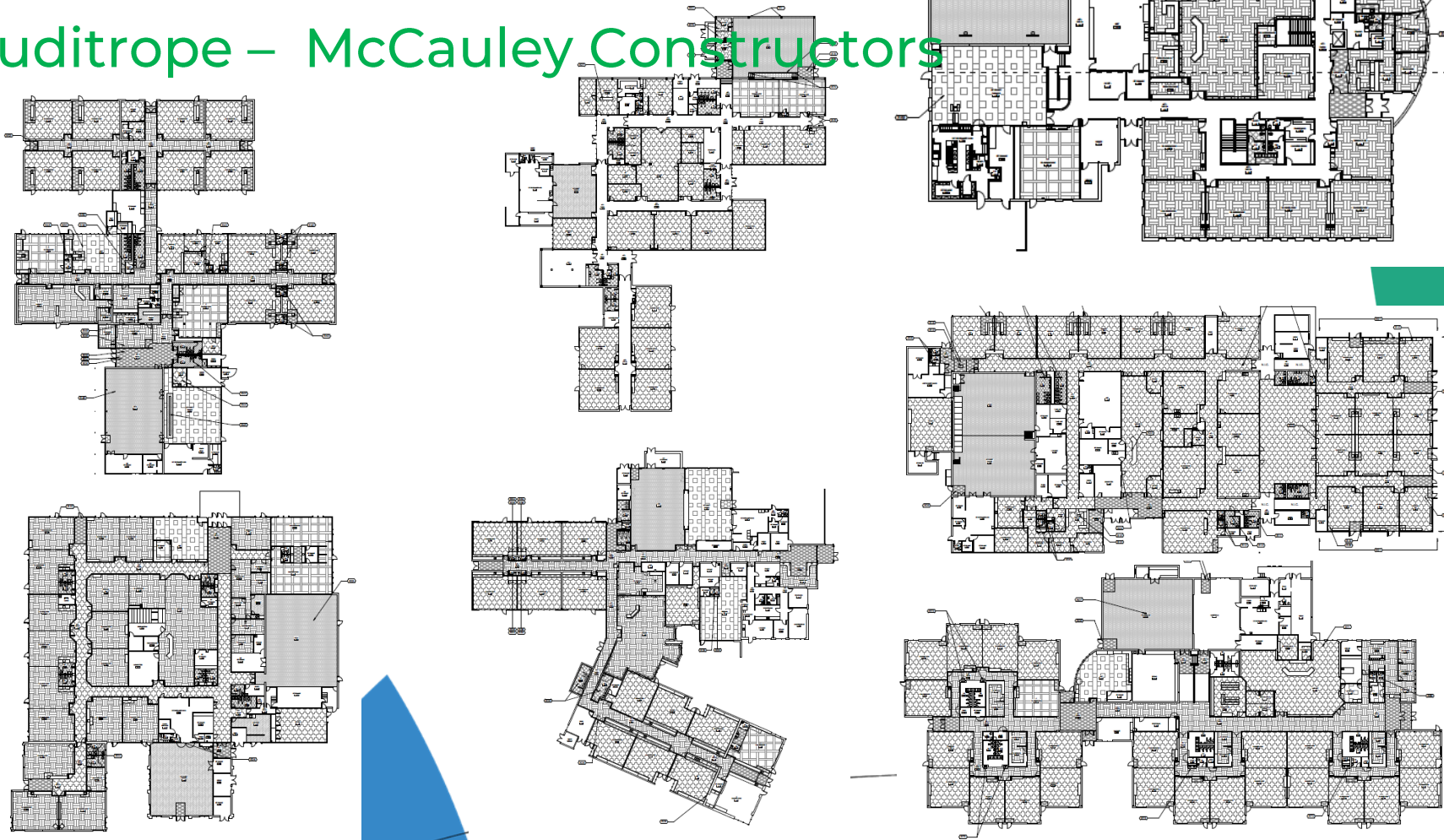
Rooney Ranch ES



Governor's Ranch ES

DW – Flooring II
Glennon Heights ES, Little ES, Parr ES
Pennington ES, S Lakewood ES
Swanson ES, Van Arsdale ES

studitrope – McCauley Constructors



DW Playgrounds II 2022 Lime Green – T2

Confirm location of ADA HC ramp

GENERAL NOTES

1. ALL WORK SHALL BE IN ACCORDANCE WITH THE LATEST EDITIONS OF THE FOLLOWING CODES AND STANDARDS:
 - A. ADA ACCESSIBILITY STANDARDS FOR PUBLIC BUILDINGS AND PUBLIC ACCOMMODATION (2010)
 - B. INTERNATIONAL BUILDING CODE (2021)
 - C. INTERNATIONAL PLUMBING CODE (2021)
 - D. INTERNATIONAL MECHANICAL AND ELECTRICAL CODE (2021)
 - E. INTERNATIONAL FIRE CODE (2021)
 - F. INTERNATIONAL ENERGY EFFICIENCY CODE (2021)
 - G. INTERNATIONAL SAFETY CODE (2021)
 - H. INTERNATIONAL SOIL AND FOUNDATION CODE (2021)
 - I. INTERNATIONAL WIND LOAD AND EFFECTS CODE (2021)
 - J. INTERNATIONAL SMOKE CONTROL CODE (2021)
 - K. INTERNATIONAL SEWER AND DRAINAGE CODE (2021)
 - L. INTERNATIONAL SIGN CODE (2021)
 - M. INTERNATIONAL TRANSPORTATION AND HIGHWAY BUILDING CODE (2021)
 - N. INTERNATIONAL CONCRETE AND MASONRY CODE (2021)
 - O. INTERNATIONAL ROOFING CODE (2021)
 - P. INTERNATIONAL GLAZING CODE (2021)
 - Q. INTERNATIONAL FLOOR AND EAVES CODE (2021)
 - R. INTERNATIONAL STEEL ERECTORS' INSTITUTE CODE (2021)
 - S. INTERNATIONAL WOOD PRESERVATION CODE (2021)
 - T. INTERNATIONAL WOOD DECKING AND WALKWAYS CODE (2021)
 - U. INTERNATIONAL WOOD PRESERVATION CODE (2021)
 - V. INTERNATIONAL WOOD PRESERVATION CODE (2021)
 - W. INTERNATIONAL WOOD PRESERVATION CODE (2021)
 - X. INTERNATIONAL WOOD PRESERVATION CODE (2021)
 - Y. INTERNATIONAL WOOD PRESERVATION CODE (2021)
 - Z. INTERNATIONAL WOOD PRESERVATION CODE (2021)
2. ALL MATERIALS SHALL BE OF THE HIGHEST QUALITY AND SHALL BE SUBJECT TO INSPECTION AND APPROVAL BY THE ARCHITECT PRIOR TO INSTALLATION.
3. ALL WORK SHALL BE COMPLETED WITHIN THE SPECIFIED TIME FRAME AND SHALL BE SUBJECT TO INSPECTION AND APPROVAL BY THE ARCHITECT PRIOR TO INSTALLATION.
4. ALL WORK SHALL BE COMPLETED WITHIN THE SPECIFIED TIME FRAME AND SHALL BE SUBJECT TO INSPECTION AND APPROVAL BY THE ARCHITECT PRIOR TO INSTALLATION.
5. ALL WORK SHALL BE COMPLETED WITHIN THE SPECIFIED TIME FRAME AND SHALL BE SUBJECT TO INSPECTION AND APPROVAL BY THE ARCHITECT PRIOR TO INSTALLATION.
6. ALL WORK SHALL BE COMPLETED WITHIN THE SPECIFIED TIME FRAME AND SHALL BE SUBJECT TO INSPECTION AND APPROVAL BY THE ARCHITECT PRIOR TO INSTALLATION.
7. ALL WORK SHALL BE COMPLETED WITHIN THE SPECIFIED TIME FRAME AND SHALL BE SUBJECT TO INSPECTION AND APPROVAL BY THE ARCHITECT PRIOR TO INSTALLATION.
8. ALL WORK SHALL BE COMPLETED WITHIN THE SPECIFIED TIME FRAME AND SHALL BE SUBJECT TO INSPECTION AND APPROVAL BY THE ARCHITECT PRIOR TO INSTALLATION.
9. ALL WORK SHALL BE COMPLETED WITHIN THE SPECIFIED TIME FRAME AND SHALL BE SUBJECT TO INSPECTION AND APPROVAL BY THE ARCHITECT PRIOR TO INSTALLATION.
10. ALL WORK SHALL BE COMPLETED WITHIN THE SPECIFIED TIME FRAME AND SHALL BE SUBJECT TO INSPECTION AND APPROVAL BY THE ARCHITECT PRIOR TO INSTALLATION.

KEY NOTES

1. SEE GENERAL NOTES FOR MATERIALS AND FINISHES.
2. SEE GENERAL NOTES FOR MATERIALS AND FINISHES.
3. SEE GENERAL NOTES FOR MATERIALS AND FINISHES.
4. SEE GENERAL NOTES FOR MATERIALS AND FINISHES.
5. SEE GENERAL NOTES FOR MATERIALS AND FINISHES.
6. SEE GENERAL NOTES FOR MATERIALS AND FINISHES.
7. SEE GENERAL NOTES FOR MATERIALS AND FINISHES.
8. SEE GENERAL NOTES FOR MATERIALS AND FINISHES.
9. SEE GENERAL NOTES FOR MATERIALS AND FINISHES.
10. SEE GENERAL NOTES FOR MATERIALS AND FINISHES.

SYMBOL LEGEND

1. SEE GENERAL NOTES FOR MATERIALS AND FINISHES.

2. SEE GENERAL NOTES FOR MATERIALS AND FINISHES.

3. SEE GENERAL NOTES FOR MATERIALS AND FINISHES.

4. SEE GENERAL NOTES FOR MATERIALS AND FINISHES.

5. SEE GENERAL NOTES FOR MATERIALS AND FINISHES.

6. SEE GENERAL NOTES FOR MATERIALS AND FINISHES.

7. SEE GENERAL NOTES FOR MATERIALS AND FINISHES.

8. SEE GENERAL NOTES FOR MATERIALS AND FINISHES.

9. SEE GENERAL NOTES FOR MATERIALS AND FINISHES.

10. SEE GENERAL NOTES FOR MATERIALS AND FINISHES.

PROJECT INFORMATION

PROJECT NO. _____

DATE _____

DESIGNED BY _____

DRAWN BY _____

CHECKED BY _____

APPROVED BY _____

**JEFFCO PUBLIC SCHOOLS
CAMPBELL ELEMENTARY
PLAYGROUND IMPROVEMENTS**
1500 Oak Street, Aurora, CO 80012



Campbell ES

GENERAL NOTES

1. ALL WORK SHALL BE IN ACCORDANCE WITH THE LATEST EDITIONS OF THE FOLLOWING CODES AND STANDARDS:
 - A. ADA ACCESSIBILITY STANDARDS FOR PUBLIC BUILDINGS AND PUBLIC ACCOMMODATION (2010)
 - B. INTERNATIONAL BUILDING CODE (2021)
 - C. INTERNATIONAL PLUMBING CODE (2021)
 - D. INTERNATIONAL MECHANICAL AND ELECTRICAL CODE (2021)
 - E. INTERNATIONAL FIRE CODE (2021)
 - F. INTERNATIONAL ENERGY EFFICIENCY CODE (2021)
 - G. INTERNATIONAL SAFETY CODE (2021)
 - H. INTERNATIONAL SOIL AND FOUNDATION CODE (2021)
 - I. INTERNATIONAL WIND LOAD AND EFFECTS CODE (2021)
 - J. INTERNATIONAL SMOKE CONTROL CODE (2021)
 - K. INTERNATIONAL SEWER AND DRAINAGE CODE (2021)
 - L. INTERNATIONAL SIGN CODE (2021)
 - M. INTERNATIONAL TRANSPORTATION AND HIGHWAY BUILDING CODE (2021)
 - N. INTERNATIONAL CONCRETE AND MASONRY CODE (2021)
 - O. INTERNATIONAL ROOFING CODE (2021)
 - P. INTERNATIONAL GLAZING CODE (2021)
 - Q. INTERNATIONAL FLOOR AND EAVES CODE (2021)
 - R. INTERNATIONAL STEEL ERECTORS' INSTITUTE CODE (2021)
 - S. INTERNATIONAL WOOD PRESERVATION CODE (2021)
 - T. INTERNATIONAL WOOD DECKING AND WALKWAYS CODE (2021)
 - U. INTERNATIONAL WOOD PRESERVATION CODE (2021)
 - V. INTERNATIONAL WOOD PRESERVATION CODE (2021)
 - W. INTERNATIONAL WOOD PRESERVATION CODE (2021)
 - X. INTERNATIONAL WOOD PRESERVATION CODE (2021)
 - Y. INTERNATIONAL WOOD PRESERVATION CODE (2021)
 - Z. INTERNATIONAL WOOD PRESERVATION CODE (2021)
2. ALL MATERIALS SHALL BE OF THE HIGHEST QUALITY AND SHALL BE SUBJECT TO INSPECTION AND APPROVAL BY THE ARCHITECT PRIOR TO INSTALLATION.
3. ALL WORK SHALL BE COMPLETED WITHIN THE SPECIFIED TIME FRAME AND SHALL BE SUBJECT TO INSPECTION AND APPROVAL BY THE ARCHITECT PRIOR TO INSTALLATION.
4. ALL WORK SHALL BE COMPLETED WITHIN THE SPECIFIED TIME FRAME AND SHALL BE SUBJECT TO INSPECTION AND APPROVAL BY THE ARCHITECT PRIOR TO INSTALLATION.
5. ALL WORK SHALL BE COMPLETED WITHIN THE SPECIFIED TIME FRAME AND SHALL BE SUBJECT TO INSPECTION AND APPROVAL BY THE ARCHITECT PRIOR TO INSTALLATION.
6. ALL WORK SHALL BE COMPLETED WITHIN THE SPECIFIED TIME FRAME AND SHALL BE SUBJECT TO INSPECTION AND APPROVAL BY THE ARCHITECT PRIOR TO INSTALLATION.
7. ALL WORK SHALL BE COMPLETED WITHIN THE SPECIFIED TIME FRAME AND SHALL BE SUBJECT TO INSPECTION AND APPROVAL BY THE ARCHITECT PRIOR TO INSTALLATION.
8. ALL WORK SHALL BE COMPLETED WITHIN THE SPECIFIED TIME FRAME AND SHALL BE SUBJECT TO INSPECTION AND APPROVAL BY THE ARCHITECT PRIOR TO INSTALLATION.
9. ALL WORK SHALL BE COMPLETED WITHIN THE SPECIFIED TIME FRAME AND SHALL BE SUBJECT TO INSPECTION AND APPROVAL BY THE ARCHITECT PRIOR TO INSTALLATION.
10. ALL WORK SHALL BE COMPLETED WITHIN THE SPECIFIED TIME FRAME AND SHALL BE SUBJECT TO INSPECTION AND APPROVAL BY THE ARCHITECT PRIOR TO INSTALLATION.

KEY NOTES

1. SEE GENERAL NOTES FOR MATERIALS AND FINISHES.
2. SEE GENERAL NOTES FOR MATERIALS AND FINISHES.
3. SEE GENERAL NOTES FOR MATERIALS AND FINISHES.
4. SEE GENERAL NOTES FOR MATERIALS AND FINISHES.
5. SEE GENERAL NOTES FOR MATERIALS AND FINISHES.
6. SEE GENERAL NOTES FOR MATERIALS AND FINISHES.
7. SEE GENERAL NOTES FOR MATERIALS AND FINISHES.
8. SEE GENERAL NOTES FOR MATERIALS AND FINISHES.
9. SEE GENERAL NOTES FOR MATERIALS AND FINISHES.
10. SEE GENERAL NOTES FOR MATERIALS AND FINISHES.

SYMBOL LEGEND

1. SEE GENERAL NOTES FOR MATERIALS AND FINISHES.

2. SEE GENERAL NOTES FOR MATERIALS AND FINISHES.

3. SEE GENERAL NOTES FOR MATERIALS AND FINISHES.

4. SEE GENERAL NOTES FOR MATERIALS AND FINISHES.

5. SEE GENERAL NOTES FOR MATERIALS AND FINISHES.

6. SEE GENERAL NOTES FOR MATERIALS AND FINISHES.

7. SEE GENERAL NOTES FOR MATERIALS AND FINISHES.

8. SEE GENERAL NOTES FOR MATERIALS AND FINISHES.

9. SEE GENERAL NOTES FOR MATERIALS AND FINISHES.

10. SEE GENERAL NOTES FOR MATERIALS AND FINISHES.

PROJECT INFORMATION

PROJECT NO. _____

DATE _____

DESIGNED BY _____

DRAWN BY _____

CHECKED BY _____

APPROVED BY _____

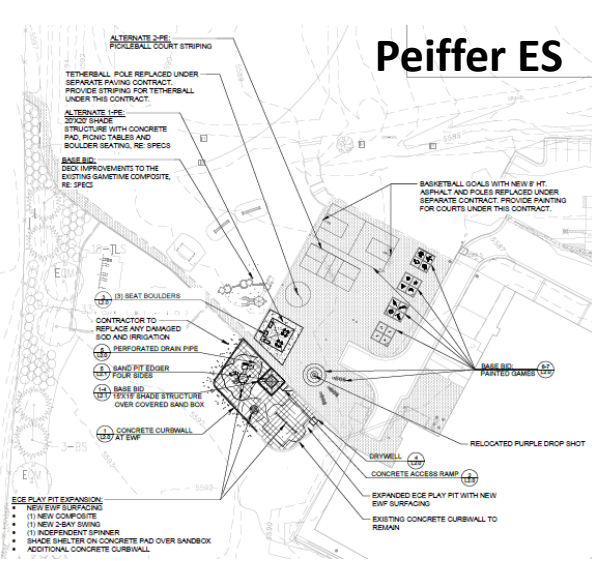
**JEFFCO PUBLIC SCHOOLS
FAIRMOUNT ELEMENTARY
PLAYGROUND IMPROVEMENTS**
1595 W. 50TH AVE., GOLDEN, CO 80401

**MATERIALS PLAN
L-201**

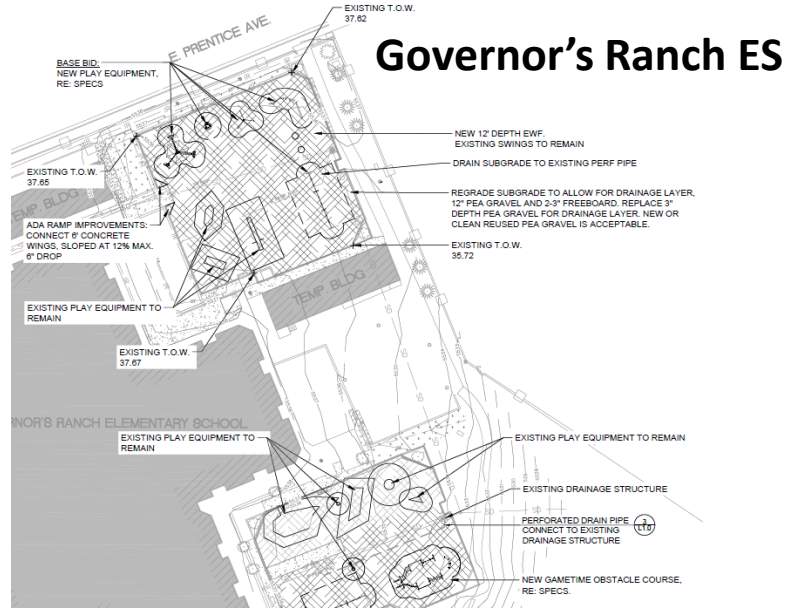


Fairmount ES

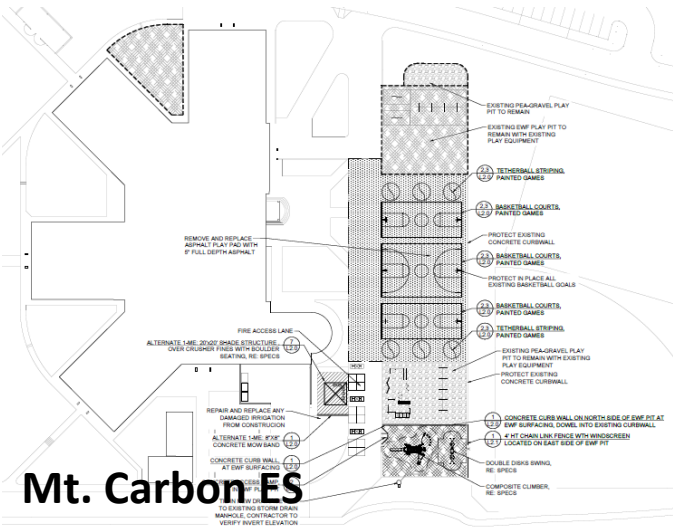
DW Playgrounds I 2022 Design Concepts – Arrow J



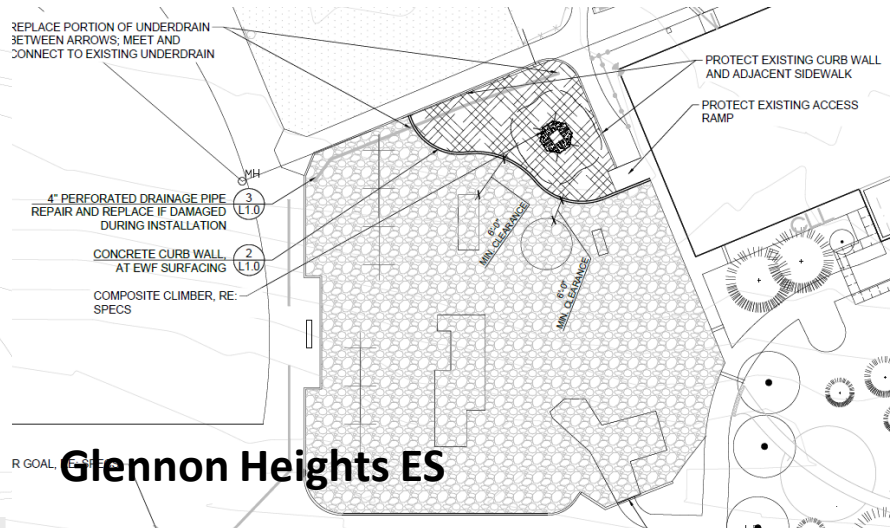
Peiffer ES



Governor's Ranch ES



Mt. Carbon ES

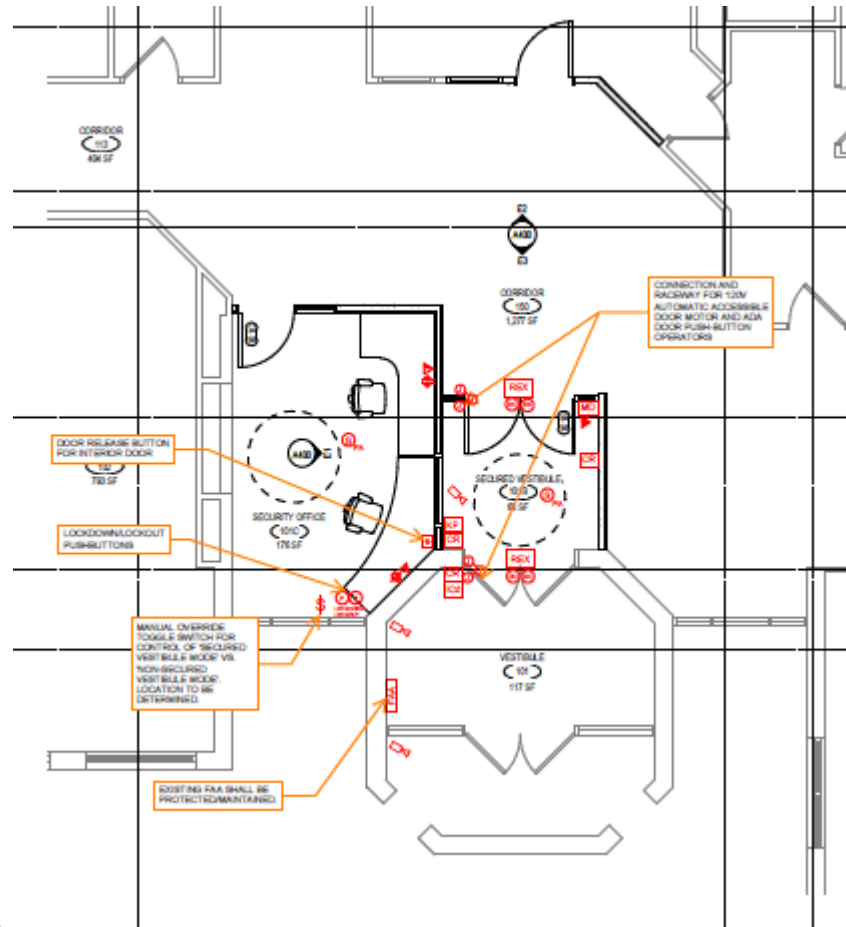


Glennon Heights ES

Efficiency Future Ready Bergen Valley ES

Construction

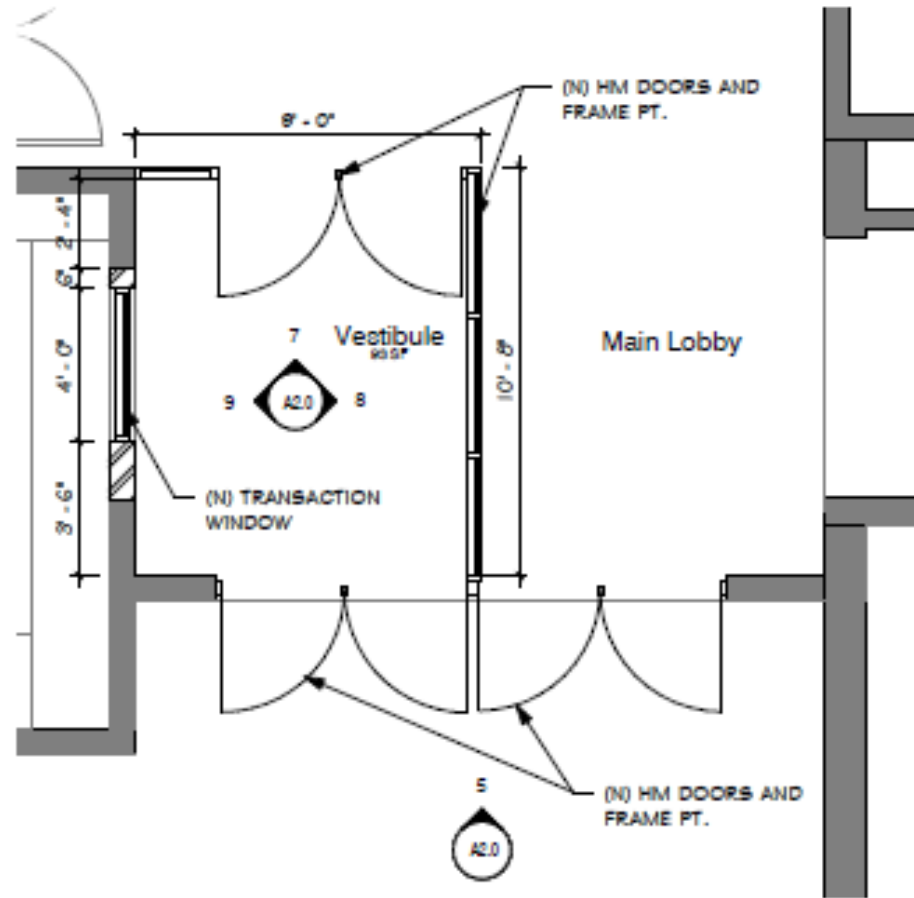
EUA – Interlock



Efficiency Future Ready Slater ES

Construction

Eidos – Bryan



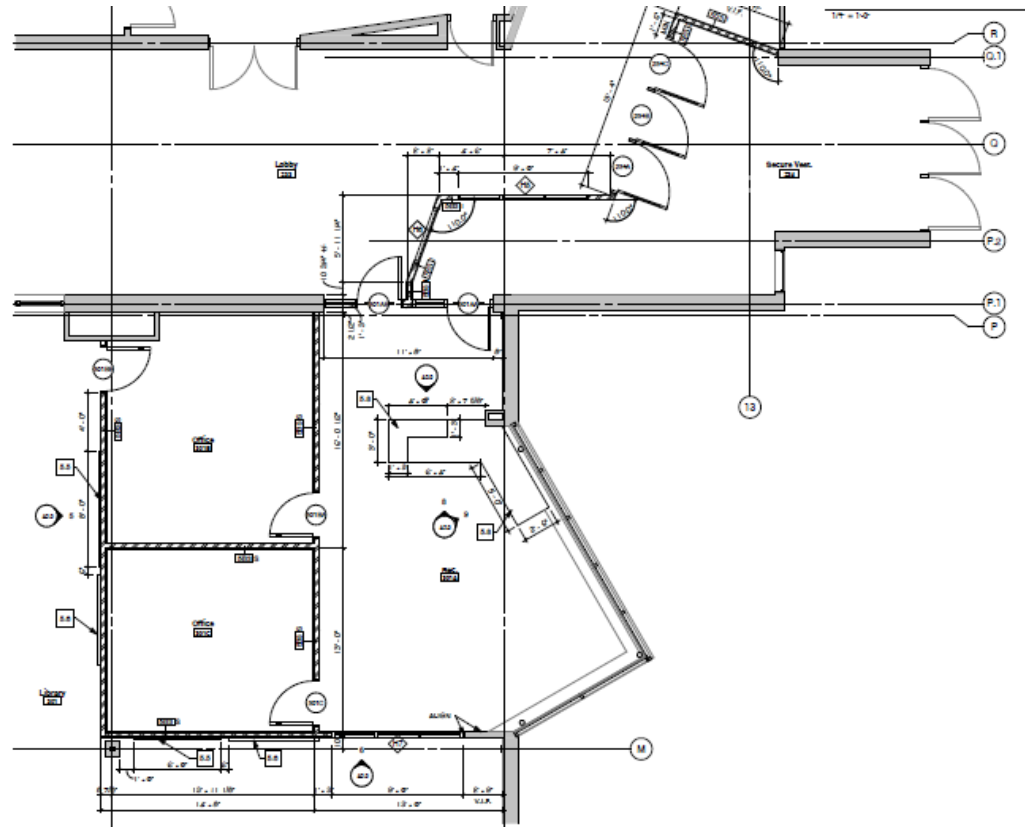
4. Enlarged Plan

1/4" = 1'-0"

Efficiency Future Ready North Arvada MS

Construction

Eidos – Bryan



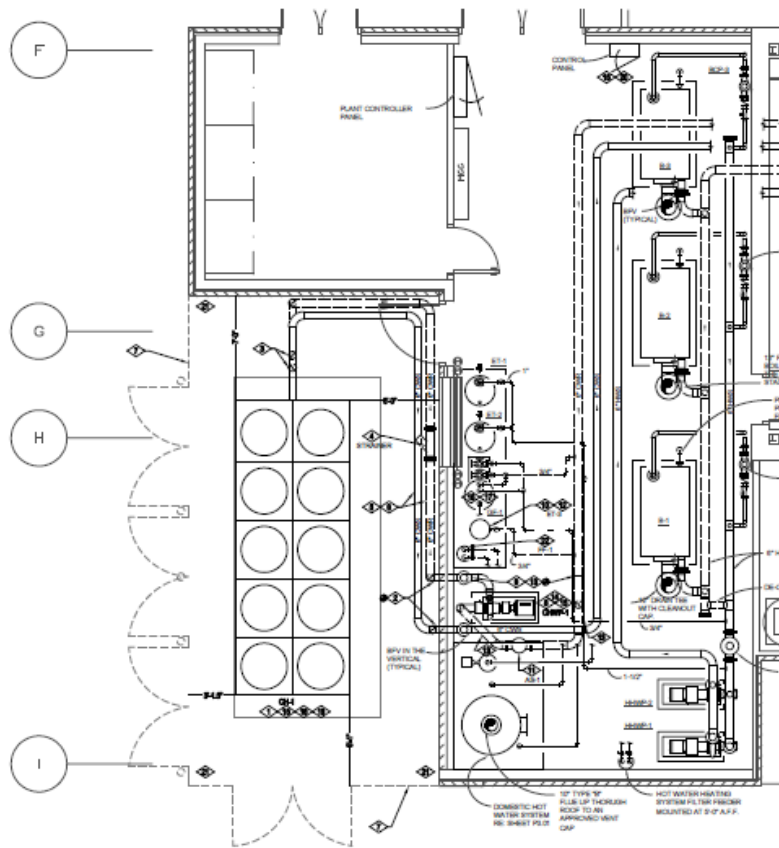
4. Secure Vestibule and Office Enlarged Plan

1/4" = 1'-0"

Efficiency Future Ready North Arvada MS

Construction

Columbine Engineering – JCOR



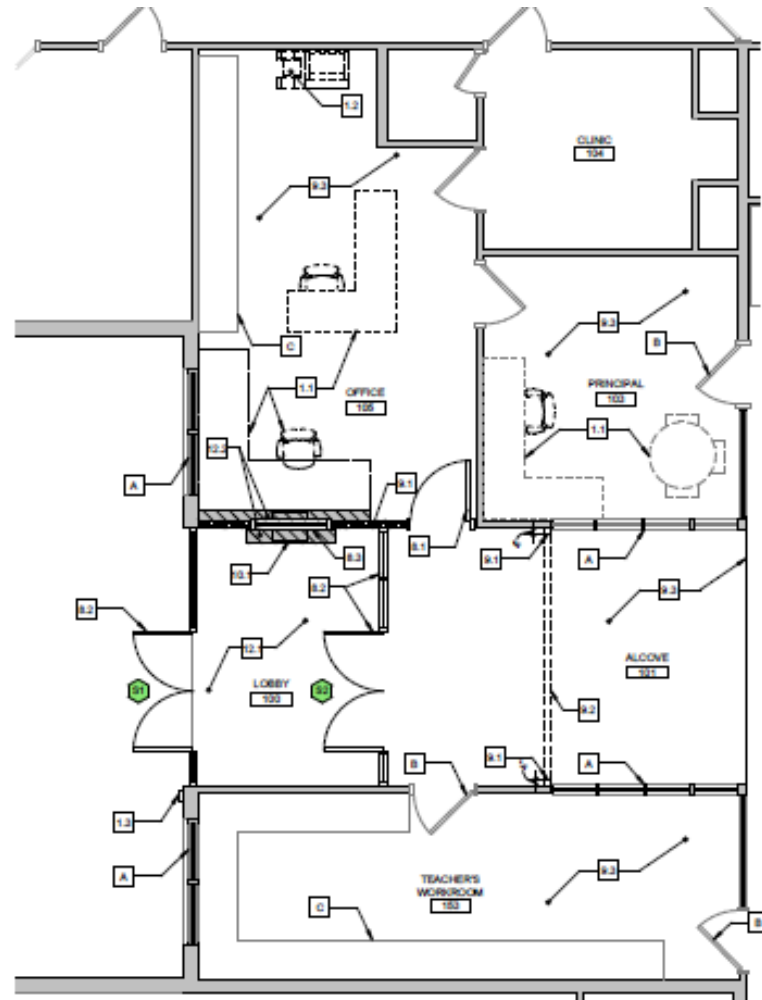
ENLARGED MECHANICAL ROOM NEW WORK PLAN

SCALE: 1/4" = 1'-0"

Efficiency Future Ready Peck ES

Construction

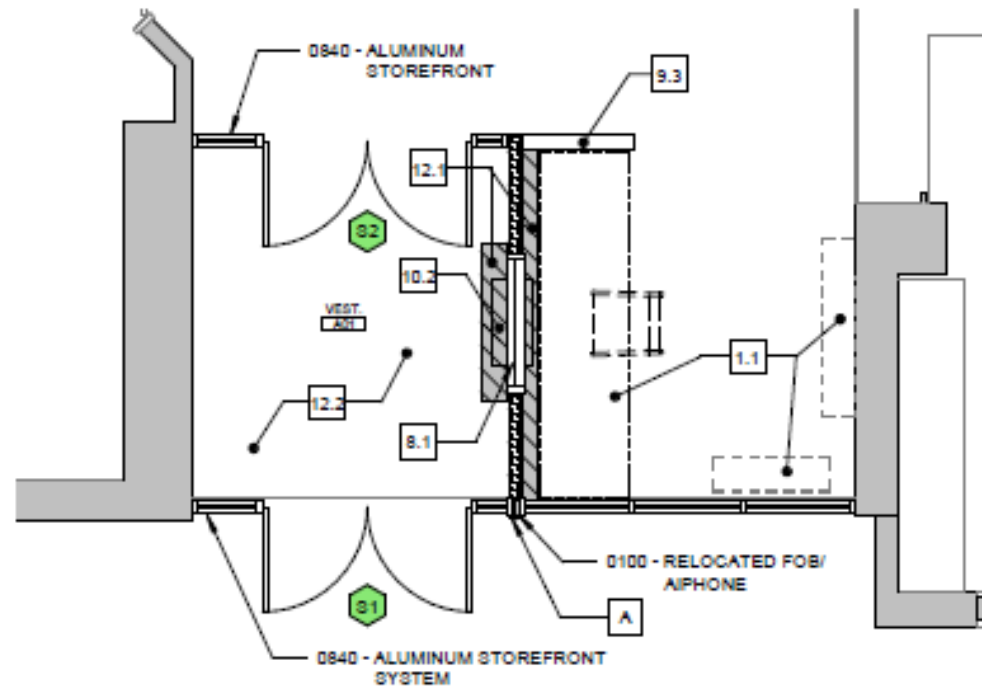
Larson Incitti – AD Miller



Efficiency Future Ready Secret ES

Construction

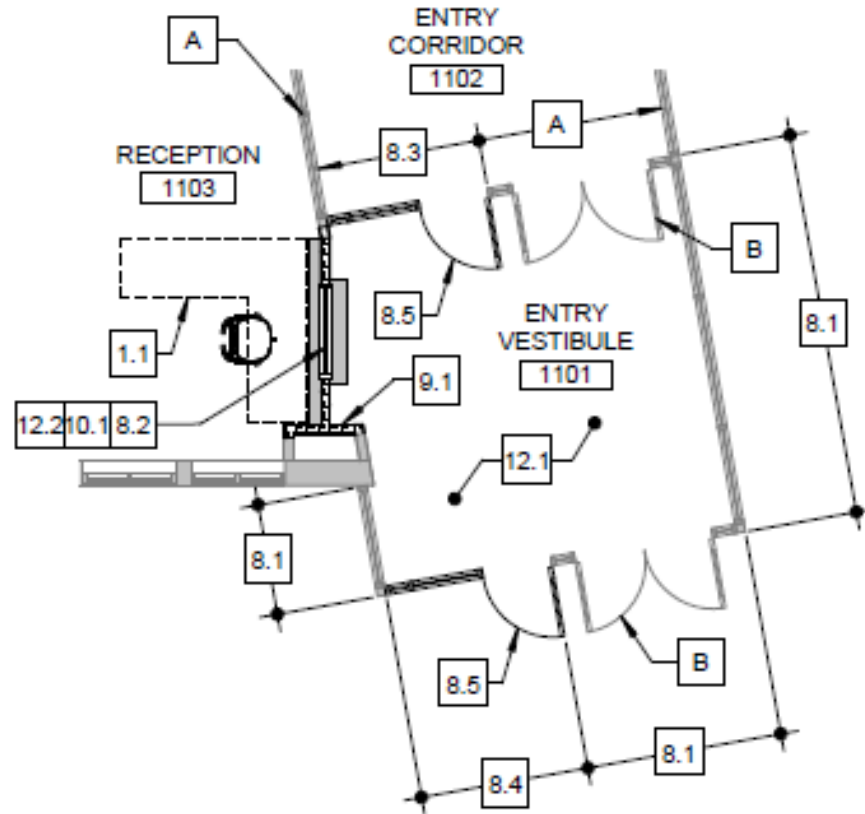
Larson Incitti – AD Miller



Efficiency Future Ready Creighton MS

Construction

Larson Incitti – AD Miller



DW LED 2022

Ackerman – CMGC McKinstry

Construction Documents



1. Brady
2. Bradford North
3. Bradford South
4. Ute Meadows ES
5. Leawood ES
6. Normandy ES
7. Rooney Ranch ES
8. Creighton MS
9. Moore MS
10. Mandalay MS
11. Deer Creek MS
12. Lawrence
13. Weber ES
14. Meiklejohn
15. West Woods
16. Chatfield HS
17. Dakota Ridge HS

Security Glass Installation 11 - Schools

Swanson 90% Glennon Heights
Arvada West S Lakewood 5/1
Campbell Little 75%
Fairmount Parr - Complete
Bear Creek K8 Pennington
Summit Ridge 5/1



Clarification of Last Month Vote

~~Colorow ES~~

Arvada West HS

Warren Tech North

Warder ES

Construction

Construction

Construction

Exceeds
Budget by
Over
\$500,000

Exceeds
Budget by
Over
\$500,000

Exceeds
Budget by
Over
\$500,000

Secure entry
\$382,700

Secure entry
\$291,700

Secure entry
\$391,200

BOE 4/7/22

BOE 4/7/22

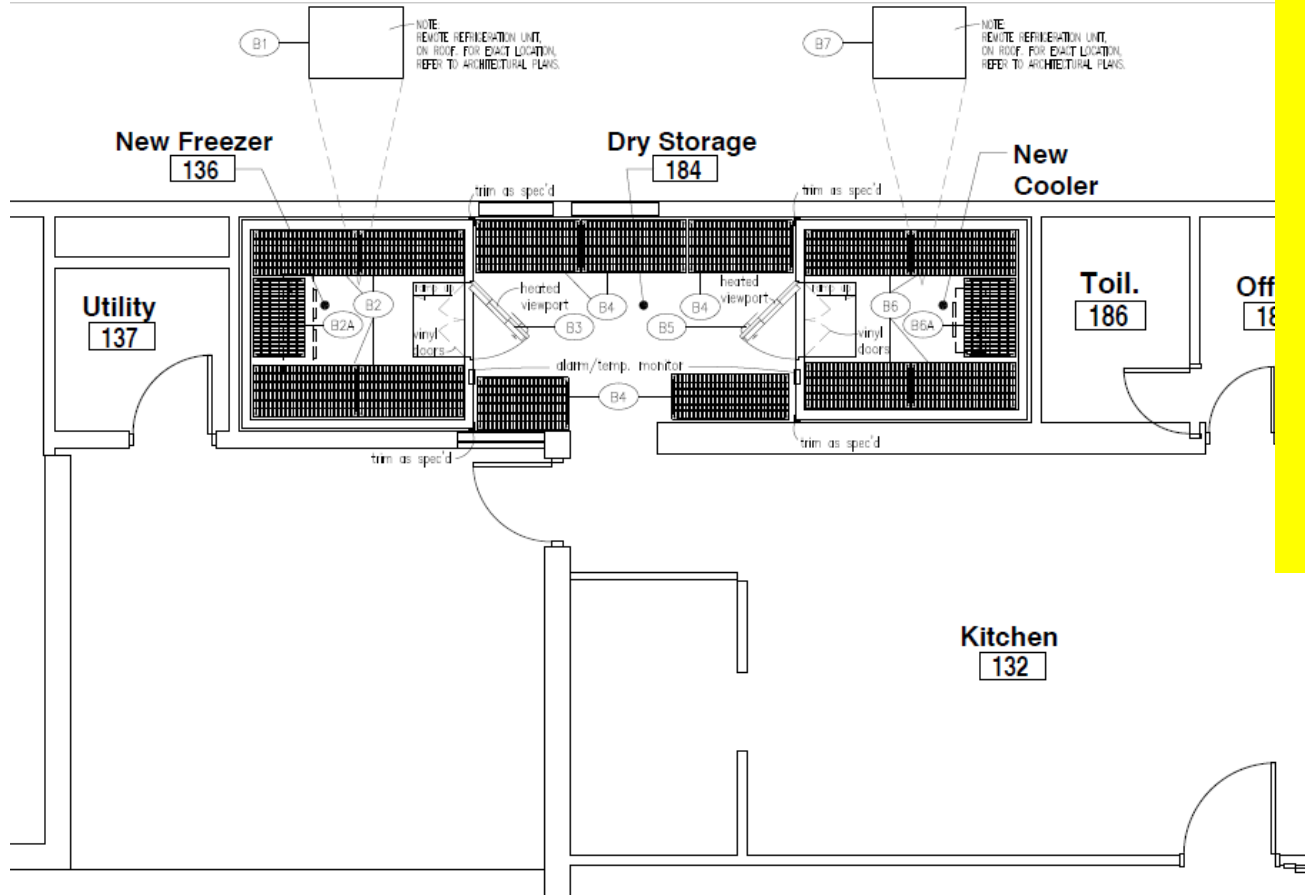
BOE 4/7/22

Re-Allocation of Bond Scope Funding from (14 kitchens) Food & Nutrition Services

	Location	Bond Funding relocated to	Reason for Fund Relocation
1	Allendale	To Green mountain	Facility Closed
2	Bergan Meadow	To Wilmore Davis	Cannot be feasibly modified
3	Coal Creek	Partial to To Wilmore Davis Partial to To Westgate	Cannot be feasibly modified
4	Colorow	To Slater	Relocated to a higher utilized facility
5	Coronado	To Green mountain	Cannot be feasibly modified
6	Deer Creek	To Westgate	Cannot be feasibly modified
7	Governors Ranch	To NAMS	Cannot be feasibly modified
8	Kendelvue	To NAMS	Cannot be feasibly modified
9	Little	Partial To NAMS Partial to To Westgate	Cannot be feasibly modified
10	Mandalay	To Warder	Cannot be feasibly modified
11	Moore	To Westgate	Cannot be feasibly modified
12	Parmalee	To Green mountain	Solution not acceptable due to mountain climate
13	Red Rocks	To Westgate	Red Rocks - Kitchen addition in future plans
14	Weber	Partial to To Westgate Partial stays at Weber	Grant Funding provide most of the needed funding

Efficiency Future Ready Wilmore Davis ES

Eidos – Mark Young



Construction
Budget

\$838,372

BOE Approved Contract

\$1,171,389

+

Kitchen Alt

\$183,370

=

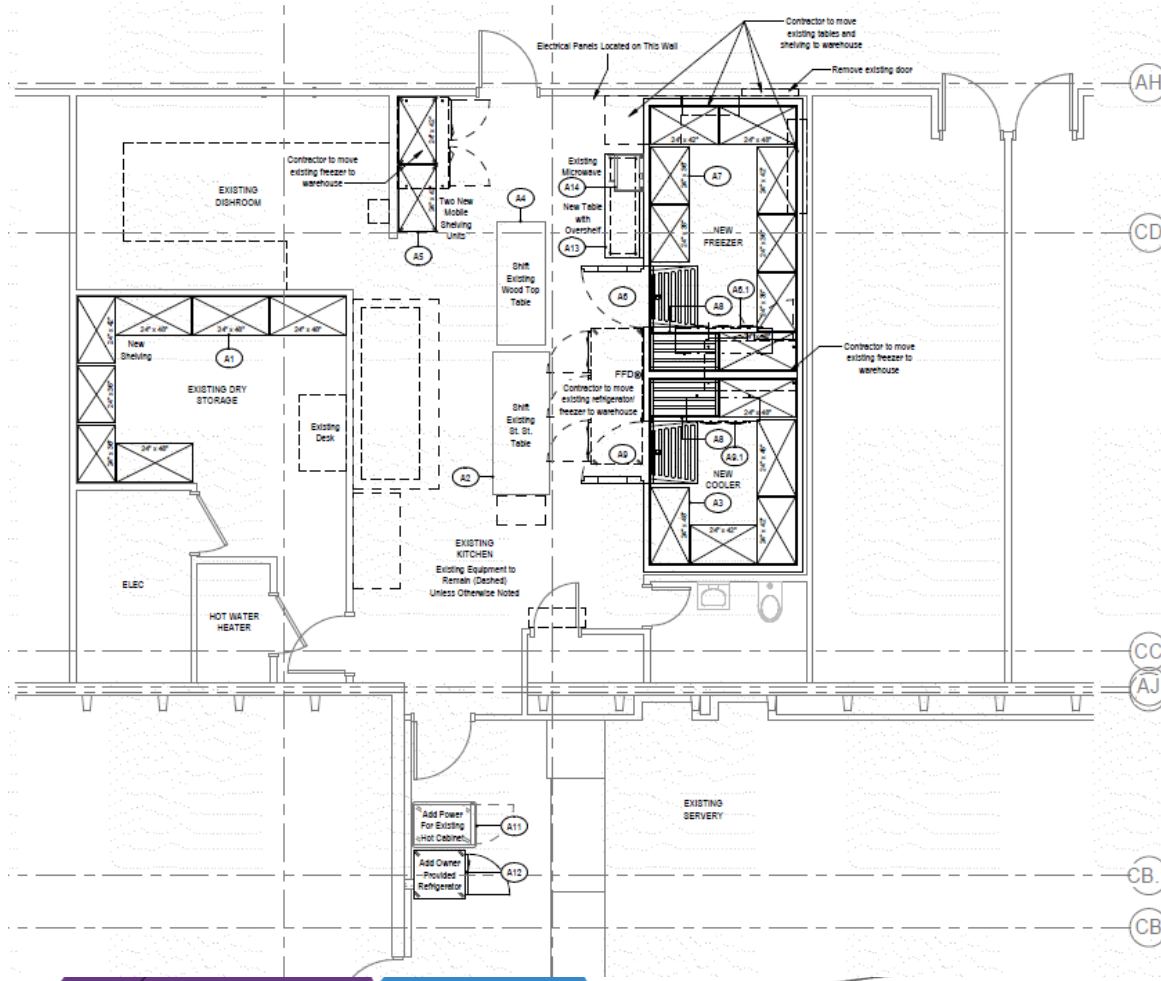
\$1,354,759

\$516,387

Over Budget

Efficiency Future Ready Westgate ES

Treanor HL- AD Miller



Construction
Budget

\$746,094

BOE Approved Contract

\$1,121,975

+

Kitchen Alt

\$230,755

=

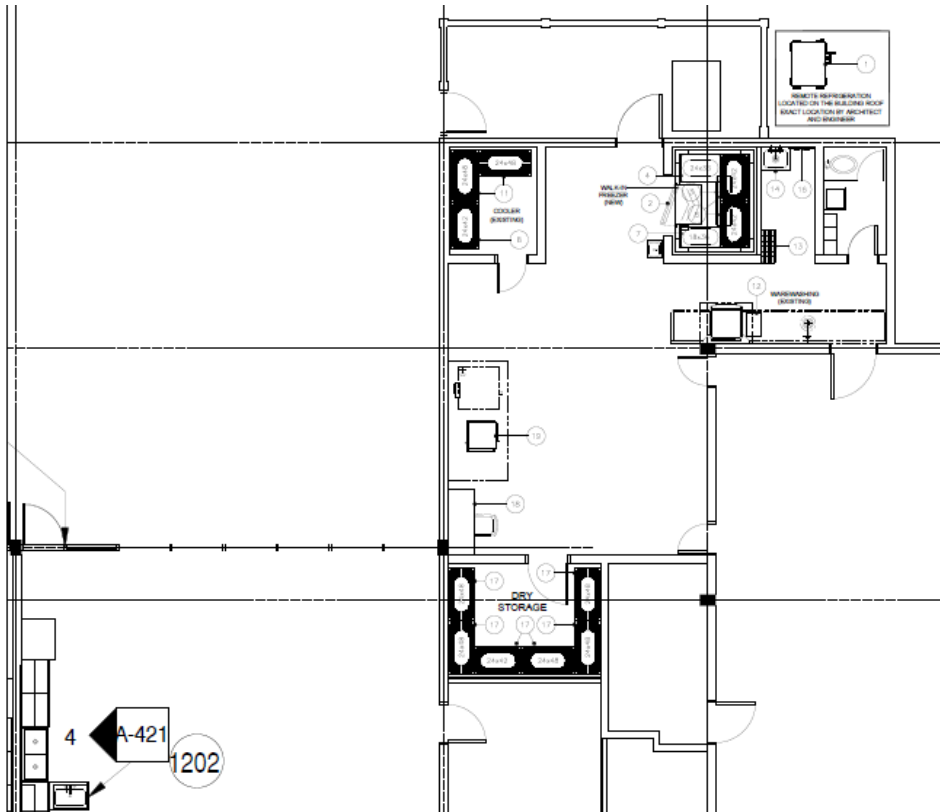
\$1,352,730

\$606,636

Over Budget

Efficiency Future Ready Green Mountain ES

AMD – PG Arnold



FOODSERVICE EQUIPMENT PLAN

Scale: 1/4" = 1'-0"

Construction
Budget

\$435,090

BOE Approved Contract

\$724,000

+

Kitchen Alt

\$240,000

=

\$964,000

\$528,910

Over Budget

Kitchen Budget Increase Implications

Wilmore Davis ES

Construction
Budget

\$838,372

BOE Approved Contract

\$1,171,389

+

Kitchen Alt

\$183,370

=

\$1,354,759

\$516,387

Over Budget

Westgate ES

Construction
Budget

\$746,094

BOE Approved Contract

\$1,121,975

+

Kitchen Alt

\$230,755

=

\$1,352,730

\$606,636

Over Budget

Green Mountain ES

Construction
Budget

\$435,090

BOE Approved Contract

\$724,000

+

Kitchen Alt

\$240,000

=

\$964,000

\$528,910

Over Budget

2023

35 - Efficiency Future
Ready
&
DW projects

Efficiency Future Ready Wheat Ridge HS

Eidos – TBD

Design
Development
Bid October



2023 New Efficiency Future Ready & DW Projects

Location	Sched	Description
UTE Meadows	9/1/2022	Late Summer Re-Bid Efficiency & Future Ready
Blue Heron	9/1/2022	Late Summer Re-Bid Efficiency & Future Ready
Mortensen	9/1/2022	Late Summer Re-Bid Efficiency & Future Ready
Shaffer	9/1/2022	Late Summer Re-Bid Efficiency & Future Ready
DW FA Upgrade	9/1/2022	FA Upgrade required by Fire Department - Pomona, D'Evelyn, Lakewood HS
HOLD - DW LED	9/1/2022	UTE Meadows, Blue Heron, Mortensen, Shaffer, Bergen Valley
Swanson	9/1/2022	Efficiency & Future Ready
Van Arsdale	9/1/2022	Efficiency & Future Ready
Oberon	9/1/2022	Efficiency & Future Ready
Governors Ranch	9/1/2022	Efficiency & Future Ready
Bear Creek K-8	9/1/2022	Efficiency & Future Ready
Falcon Bluffs MS	9/1/2022	Efficiency & Future Ready
Pennington ES	9/1/2022	Add one section of roof to raise mech unit
Campbell	9/1/2022	Efficiency & Future Ready
Molholm	9/1/2022	Efficiency & Future Ready
Fairmount Mechanical	9/1/2022	Late Summer Re-Bid 2022 HVAC Project
DW Mechanical 2023	9/1/2022	Westwoods \$1,174,950 Bradford South \$1,304,100 Sobesky (old stevens) \$777,000 boiler priority may be
Glennon Heights	9/1/2022	Efficiency & Future Ready
Edgewater	9/1/2022	Efficiency & Future Ready
Ken Caryl	9/1/2022	Efficiency & Future Ready -

Location	Sched	Description
Little	9/1/2022	Efficiency & Future Ready
Parr	9/1/2022	Efficiency & Future Ready
S Lakewood	9/1/2022	Efficiency & Future Ready - 2 air handlers are shot - not in scope
Connections	9/1/2022	Efficiency & Future Ready
Coal Creek K8	9/1/2022	Efficiency & Future Ready
Warren Tech Central	9/1/2022	Efficiency & Future Ready -
Deer Creek/ Mandalay / Moore MS	9/1/2022	Late Summer Bid Efficiency & Future Ready
Kendallvue	9/1/2022	Efficiency & Future Ready
Mt Carbon	9/1/2022	Efficiency & Future Ready
Peiffer	9/1/2022	Efficiency & Future Ready
Summit Ridge	9/1/2022	Efficiency & Future Ready
Drake Middle	9/1/2022	Efficiency & Future Ready
Bergen Meadow	9/1/2022	Efficiency & Future Ready
Dunstan MS	9/1/2022	Efficiency & Future Ready

Next Meeting 5/19/22